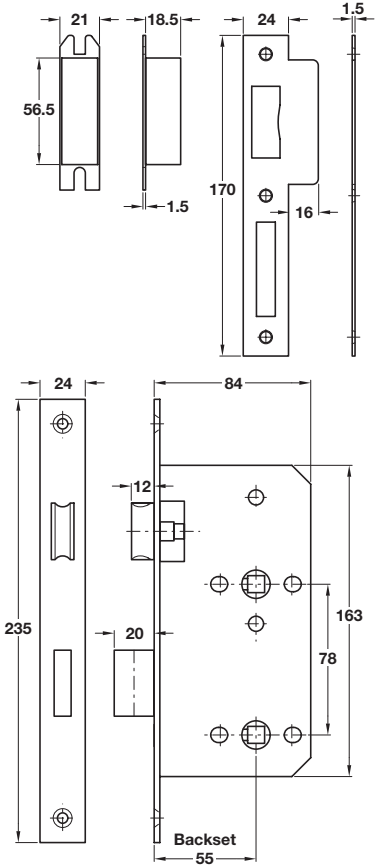


Startec mortice bathroom/WC lock



- > DoP No.: 911.02.B
- > Latchbolt operated by lever handles, deadbolt operated by turn/emergency release
- > Case: Steel, 15 mm wide
- > Forend: Square or radius. Stainless steel, 24 mm wide
- > Strike plate: Square, flat. Included. Stainless steel
- > Followers: 8 mm for latch and 8 mm for deadbolt. For use with sprung or unsprung furniture, 8 mm turn
- > Holed for bolt through furniture at 38 mm centres
- > Approved CF 5395 certifire
- > Order qty: 1 pc

BS EN 12209

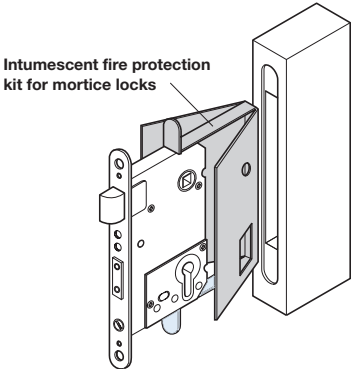
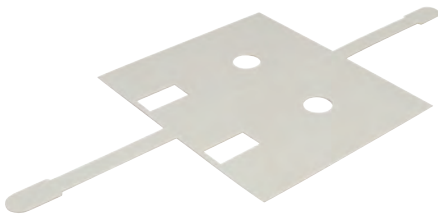
3 X 8 1 0 G - B G 2 0



Backset 55 mm, case size 84 mm

Finish	Square forend	Radius forend
Satin stainless steel	911.02.149	911.02.157

Intumescent fire protection kit



- > For use with mortice lock shown above
- > Self adhesive shaped pads, cut to size
- > Material expands substantially when exposed to hot temperatures for protection of locks
- > Provides fire resistance of up to 30 or 60 minutes
- > Replaces intumescent mastic or paste
- > Order qty: 1 set

Fire resistance	Material	Cat. No.
Up to 30 mins	1 mm thick	950.11.010
Up to 60 mins	2 mm thick	950.11.011



Copper finishes are also available to order on request - please contact us for further information