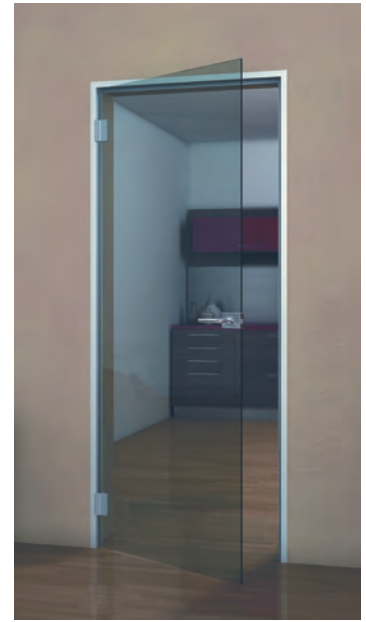


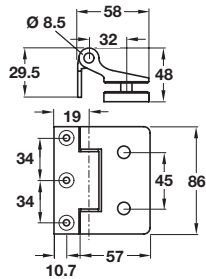
METALGLAS GLASS DOOR HINGES

Glass doors allow light to flood into a room giving the impression of greater space. By using Fernando glass door hinges you can fit frameless doors in existing doorways. Universal glass door hinges are available for any rebate depth.



For information on glass preparation, please contact us.

Metalglas Fernando slim glass door hinge

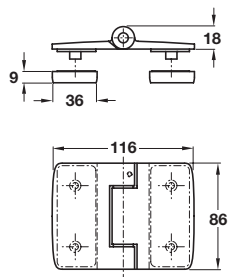


- > For left or right hand use
- > Ideal for retro fit
- > For 8-12 mm toughened glass
- > Max. door weight 60 kg (per pair)
- > Brass
- > Order qty: 1 pc (2 pcs required per door)



Finish	Cat. No.
Satin nickel-plated	981.14.326
Satin chrome-plated	981.14.324

Metalglas Fernando slim glass to glass hinge



- > For left or right hand use
- > For 8-12 mm toughened glass
- > Max. door weight 60 kg (per pair)
- > Aluminium
- > Order qty: 1 pc (2 pcs required per door)



Finish	Cat. No.
Satin nickel-plated	981.14.336
Satin chrome-plated	981.14.334

TOH AH 2016, © Hafele U.K. Ltd 2016. Dimensional data not binding. We reserve the right to alter specifications without notice.