

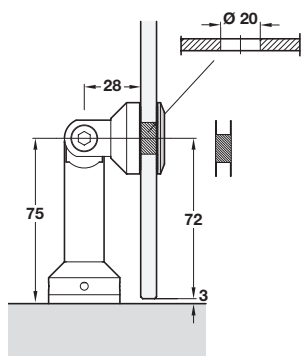
# METALGLAS FIXED PANEL SYSTEM

Designed for fixed glass panels where a distinctive approach is required.  
Recommended 500 mm centres.



Please contact us for advice on specification with regard to glass preparation and maximum panel width, width and system height

## Metalglas Bonomi glass to wall fixing

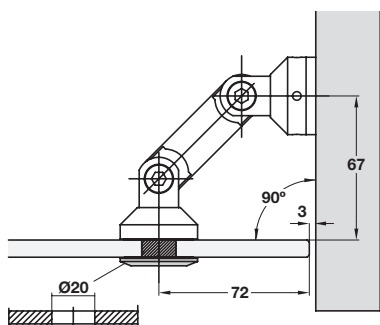


- > For 10-12 mm toughened glass
- > Fixing tool included
- > 304 grade stainless steel
- > Order qty: 1 pc

Finish  
Satin stainless steel

Cat. No.  
981.14.900

## Metalglas Bonomi glass to wall fixing



- > For 10-12 mm toughened glass
- > Fixing tool included
- > 60 mm connecting rod
- > 304 grade stainless steel
- > °Order qty: 1 pc

Finish  
Satin stainless steel

Cat. No.  
981.14.902