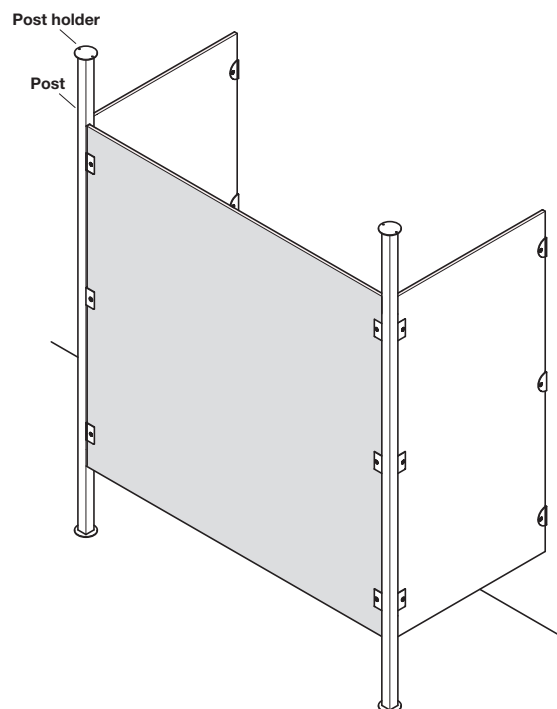
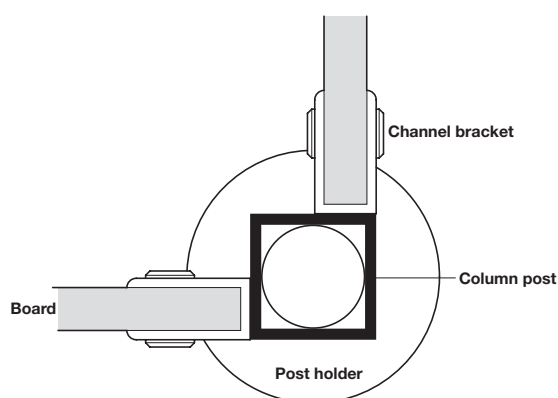
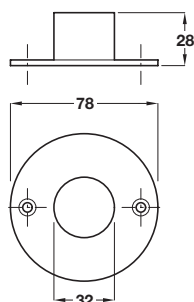


FLOOR AND CEILING POSTS FOR CUBICLE FITTINGS

- > Application:
- > General purpose cubicles of chipboard, plywood etc. construction, where floor to ceiling posts are required
- > For use with toilet cubicle fittings suitable for 17-21 mm board thickness shown on pages **78-79** and toilet cubicle fittings suitable for 12-13 mm board thickness shown on pages **84-86**.



Floor/ceiling post holder

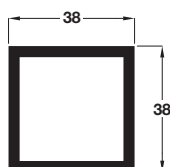


- > For use with column post
- > Supplied in sets of 2
- > Aluminium
- > Order qty: 1 set (pack of 2)



Finish	Cat. No.
Satin anodised	980.80.000

Floor to ceiling column post



- > For use with post holder
- > 4 m length
- > Aluminium
- > Order qty: 1 pc

Finish	Cat. No.
Satin anodised	980.80.010