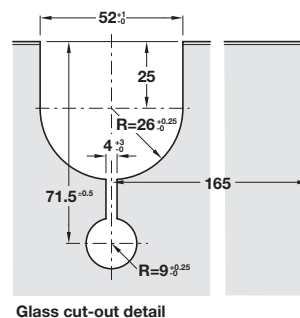
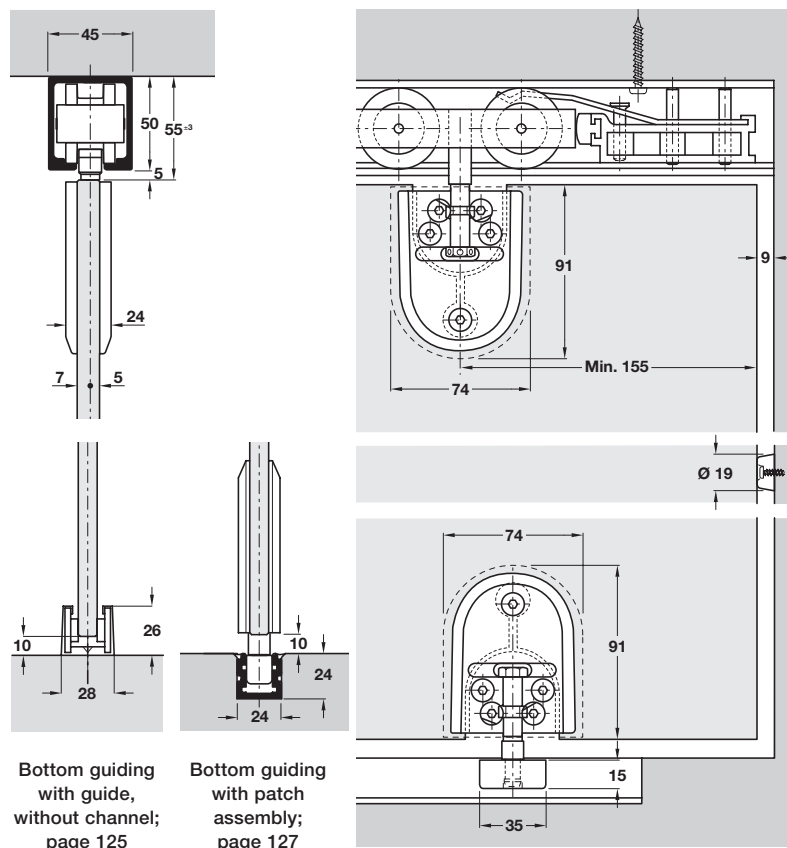
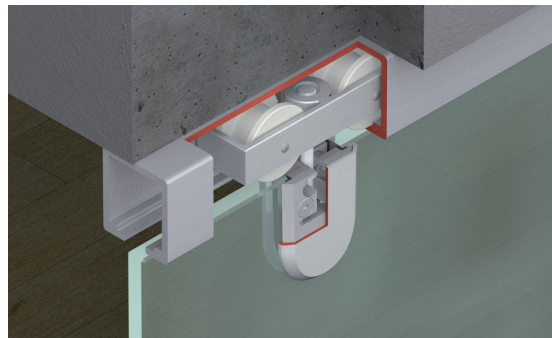


HAWA-JUNIOR 120/GP SLIDING GLASS DOOR SYSTEM

Vertically adjustable sliding door fitting for low and restricted headroom applications. Tandem rollers made of high-grade polyamide, mounted in an aluminium carriage, ensures exceptionally silent action. All parts are corrosion resistant.

- > HAWA-Junior 120/GP
- > Range:
 - Maximum door weight **120 kg**
 - Glass thickness **8-12.7 mm** (toughened or laminated)
 - Max. door height normally **2300 mm**
- > Top of glass panel close to underside of top track
- > Height adjustment facility after installation, ± 3 mm
- > Choice of bottom control - either clear threshold or floor channel to provide added stability for wider doors

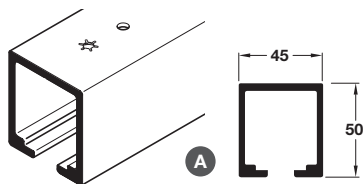


Glass cut-out detail

9

- > Tracks and fitting sets must be ordered separately, shown below and on page **123**

HAWA-Junior 120 tracks



- > Top track side fixing profile is available, shown on page **136**

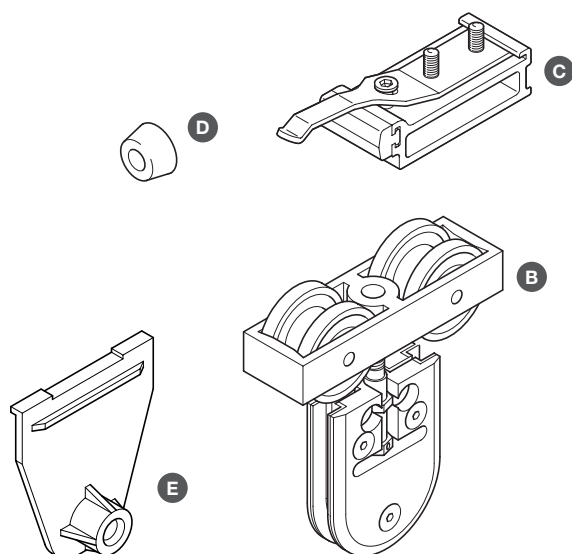
- > With screw holes for soffit fixing
- > Silver anodised aluminium
- > Two top tracks are mounted side by side for double or multiple doors
- > Order qty: 1 pc



| | | |
|----------|------------|------------|
| Length | 2.5 m | 3.0 m |
| Cat. No. | 941.20.250 | 941.20.300 |

PAGE AMENDED
16.04.18/1

HAWA-Junior 120/GP fitting set



> Fitting set, for one door

B Trolley hanger, Ø 42 mm tandem rollers, comprises trolley with M12 suspension bolt and patch suspension unit for clamping glass panel

C Track stopper, 25 x 80 x 35 mm, for adjustable mounting in top track, zinc alloy housing, adjustable retaining force

D Rubber buffer, Ø 20 x 10 mm, screw fixing

E Glass panel drilling jig, to drill correct aperture in glass door panel to fit patch assembly, with drilling bush

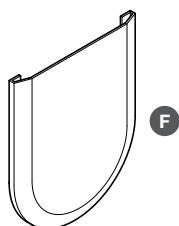
> Order qty: 1 set



941.20.000 HAS BEEN REPLACED by 941.20.010

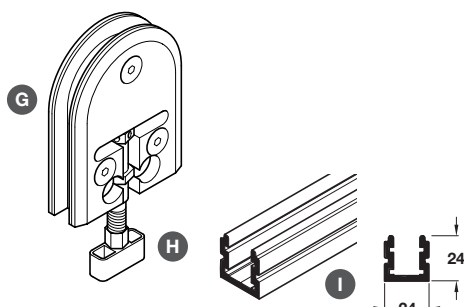
| Fitting set for 1 door | HAWA-Junior 120/GP |
|--------------------------|--------------------|
| B Trolley hanger | 2 pcs |
| C Track stopper | 2 pcs |
| D Rubber buffer | 1 pc |
| E Drilling jig | 1 pc |
| Cat. No. | 941.20.010 |
| Additional rubber buffer | |
| Item D | 407.01.930 |

HAWA-Junior 40, 80, 120 and 160/GP bottom guiding accessories and patch assembly cover plates



> Cover plates F:

1 set per panel required if clear threshold bottom guiding is used
2 sets per panel required if bottom guide channel is used



> Square patches also available, please contact us for more information



> Alternative bottom guide control options also available, shown on page 107;
For clear threshold where no floor channel is possible, or alternative continuous guiding where floor channel is permitted

> F Patch assembly cover plates

> Set comprises 4 rounded plates, plastic

> Order qty: 1 set

> G Patch fitting

> For clamping of bottom guide to glass panel

> Order qty: 1 set (2 sets required per panel)

> H Bottom guide

> For fitting to patch fitting, to keep glass door panel aligned correctly, with nylon pilot

> Order qty: 1 pc (2 pcs required per panel)

> I Channel

> Pre-drilled for countersunk screws, anodised aluminium

> Order qty: 1 pc

| Patch assembly cover plates | Cat. No. | |
|-----------------------------|------------|------------|
| Item F | | |
| Satin chrome | 940.40.027 | |
| Stainless steel | 940.40.023 | |
| Polished chrome | 940.41.029 | |
| Patch fitting | | |
| Item G | 940.40.026 | |
| Bottom guide | | |
| Item H | 940.40.035 | |
| Channel | 2.5 m | 3.5 m |
| Item I | 940.81.250 | 940.81.350 |