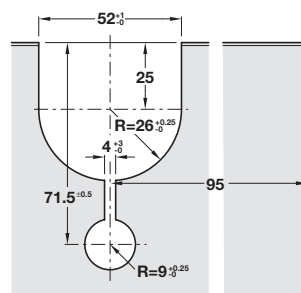
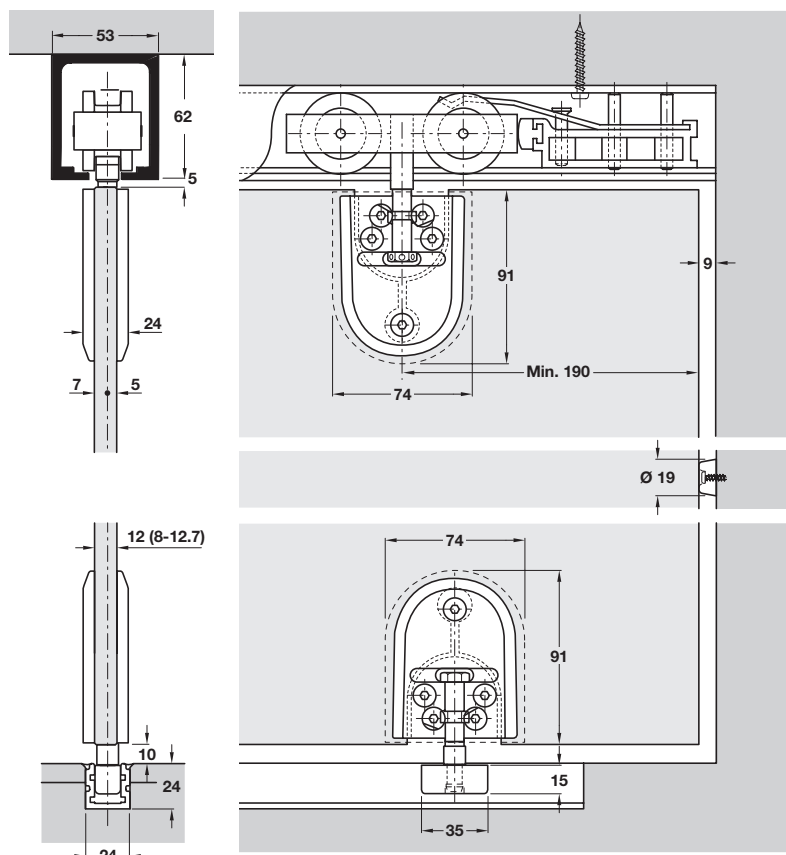
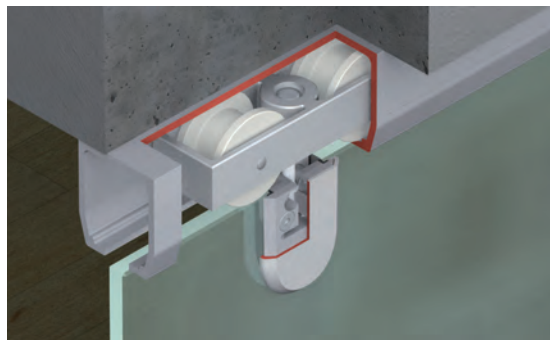


HAWA-JUNIOR 160/GP SLIDING GLASS DOOR SYSTEM

Vertically adjustable sliding door fitting for low and restricted headroom applications. Tandem rollers made of high-grade polyamide, mounted in an aluminium carriage, ensures exceptionally silent action. All parts are corrosion resistant.

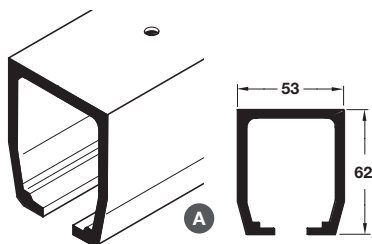
- > HAWA-Junior 160/GP
- > Range:
 - Maximum door weight **160 kg**
 - Glass thickness **8-12.7 mm** (toughened or laminated)
 - Max. door height normally **2300 mm**
- > Top of glass panel close to underside of top track
- > Height adjustment facility after installation, ± 3 mm
- > Choice of bottom control - either clear threshold or floor channel to provide added stability for wider doors



Glass cut-out detail

- 9** > Tracks and fitting sets must be ordered separately, shown below and on page 129

HAWA-Junior 160 tracks

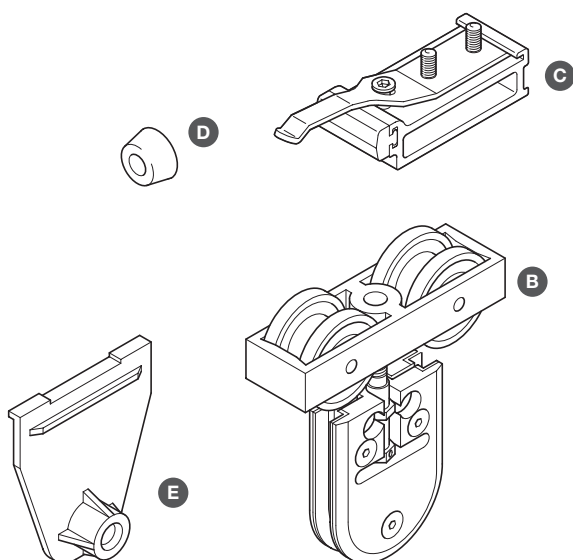


- > With screw holes for soffit fixing
- > Two top tracks are mounted side by side for double or multiple doors
- > Silver anodised aluminium
- > Order qty: 1 pc



Length	2.0 m	3.0 m
Cat. No.	941.60.200	941.60.300

HAWA-Junior 160/GP fitting set



> Fitting set, for one door

B Trolley hanger, Ø 54 mm tandem rollers, comprises trolley with M14 suspension bolt and patch suspension unit for clamping glass panel

C Track stopper, 31 x 94 x 39 mm, for adjustable mounting in top track, zinc alloy housing, adjustable retaining force

D Rubber buffer, Ø 20 x 10 mm, screw fixing

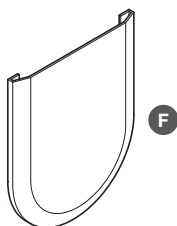
E Glass panel drilling jig, to drill correct aperture in glass door panel to fit patch assembly, with drilling bush

> Order qty: 1 set



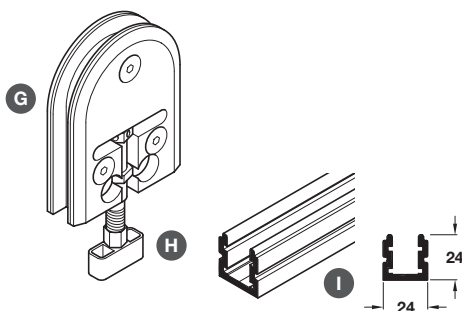
Fitting set for 1 door	HAWA-Junior 160/GP
B Trolley hanger	2 pcs
C Track stopper	2 pcs
D Rubber buffer	1 pc
E Drilling jig	1 pc
Cat. No.	941.60.099
Additional rubber buffer	
Item D	407.01.930

HAWA-Junior 40, 80, 120 and 160/GP bottom guiding accessories and patch assembly cover plates



> Cover plates F:

1 set per panel required if clear threshold bottom guiding is used
2 sets per panel required if bottom guide channel is used



> Square patches also available, please contact us for more information



> Alternative bottom guide control options also available, shown on page 121;

For clear threshold where no floor channel is possible, or alternative continuous guiding where floor channel is permitted

> F Patch assembly cover plates

> Set comprises 4 rounded plates, plastic

> Order qty: 1 set

> G Patch fitting

> For clamping of bottom guide to glass panel

> Order qty: 1 set (2 sets required per panel)

> H Bottom guide

> For fitting to patch fitting, to keep glass door panel aligned correctly, with nylon pilot

> Order qty: 1 pc (2 pcs required per panel)

> I Channel

> Pre-drilled for countersunk screws, anodised aluminium

> Order qty: 1 pc

Patch assembly cover plates	Cat. No.	
Item F		
Satin chrome	940.40.027	
Stainless steel	940.40.023	
Polished chrome	940.41.029	
Patch fitting		
Item G	940.40.026	
Bottom guide		
Item H	940.40.035	
Channel	2.5 m	3.5 m
Item I	940.81.250	940.81.350