

Modular mortice cylinder hook bolt lock case

- > Bolt operated by cylinder
- > Case: Modular black powder coated steel, 16 mm wide
- > Forend: Square, 2 piece. Stainless steel
- > Strike plate: Square, flat. Included. Stainless steel
- > Hook bolt: Brass. 11 mm throw
- > Order qty: 1 pc



Backset 45 mm, case size 63 mm

Finish	Cat. No.
Satin stainless steel	911.26.370
Satin brass	911.26.371

Mortice spring loaded handle

- > Push button release for spring pull
- > Case: Lacquered steel
- > Forend: Radius, 1 piece, stainless steel
- > Hook bolt, pull handle and push button: Zinc diecast, nickel-plated
- > Order qty: 1 pc



Finish	Cat. No.
Matt stainless steel	911.26.310

Narrow stile mortice cylinder hookbolt lock case

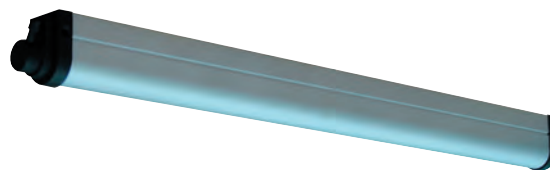
- > For narrow stile doors
- > Hookbolt: Zinc diecast/steel pin, nickel-plated. Operated by cylinder
- > Case: Galvanized steel, 16.5 mm wide
- > Forend: Square, 1 piece. Stainless steel
- > Satin stainless steel finish
- > Order qty: 1 pc



- > Strike plate 911.76.031 must be ordered separately



Item	Cat. No.
Hookbolt lock case	911.75.111
Strike plate	911.76.031

Surface overhead sliding door closer

- > Surface mounted sliding door closer
- > For lightweight doors only
- > With closing speed and closing power adjustment
- > For fixing to existing sliding door systems
- > To suit door sizes 800-900 mm
- > Order qty: 1 pc



- > Suggested door gear: HAWA-Junior 40 and 80, shown on pages **34-37**

Finish	Cat. No.
Silver sprayed	931.85.009

Silent Stop complete sets of fittings

- > Operation: Thumbturn to activate latch at head. Cylinder provides deadlock function
- > Case: Galvanized steel, 15 mm wide
- > Forend (part of lock case): Radius at lower end, 16 mm wide
- > Forend/cover: Square, 1 piece. 16 mm wide. Galvanized steel
- > Latchbolt: Brass, with 2 hexagonal socket grub screws. Vertically adjustable
- > Follower: 8 mm
- > Guiding profile and lock rod: Aluminium
- > Retaining plate: Galvanized steel. Fixed to the top of the door
- > Backset 60 mm
- > Order strike plate separately, as required
- > Order cylinders separately
- > Order qty: 1 set



For door panel heights	Cat. No.
Up to 2.4 m	911.26.052