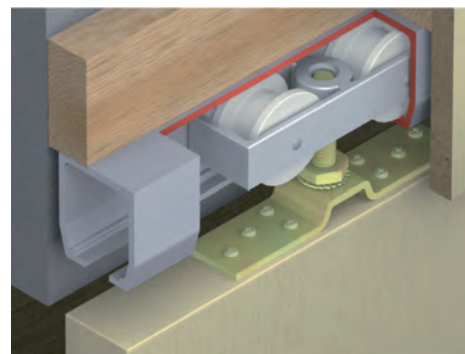
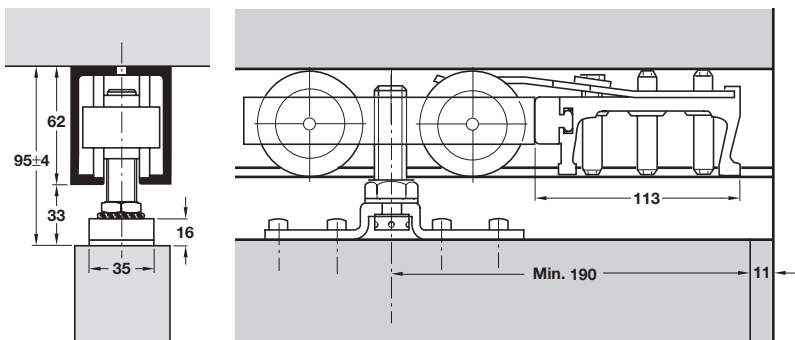


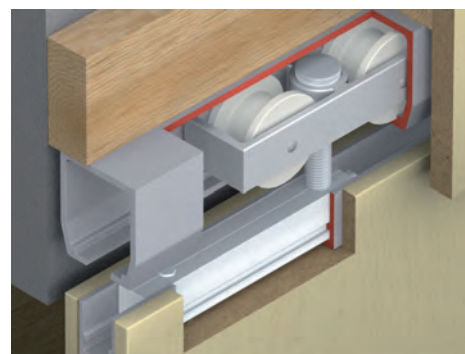
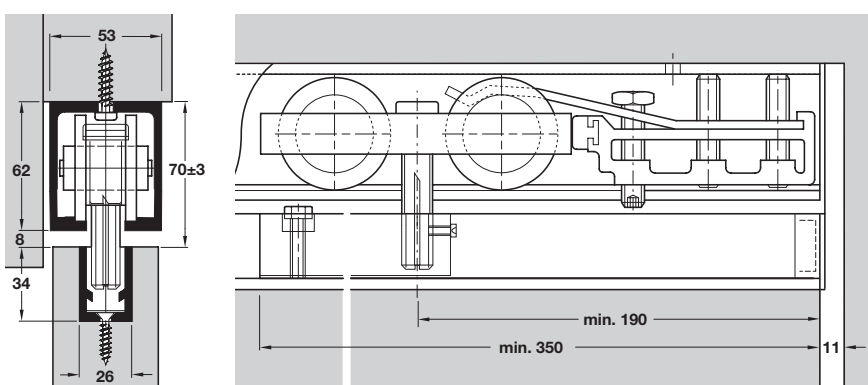
# HAWA-JUNIOR 160 AND 160/B SLIDING DOOR SYSTEM

Exceptionally light and silent action. All parts are corrosion resistant. Junior 160/B suitable for low headroom applications.

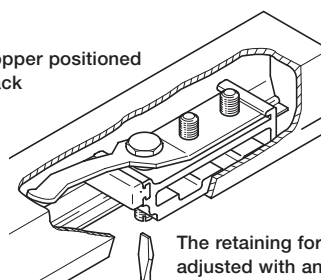
- > HAWA-Junior 160
- > Range:
  - Max. door weight **160 kg**
  - Min. door thickness **35 mm**
  - Max. door height normally **2.5 m**
- > Height adjustment  $\pm 4$  mm
- > Installation drawing reference 17689



- > HAWA-Junior 160/B
- > For low and restricted headroom applications
- > Range:
  - Max. door weight **160 kg**
  - Min. door thickness **35 mm**
  - Max. door height normally **2.5 m**
- > Height adjustment  $\pm 3$  mm
- > Installation drawing reference 17689



Track stopper positioned  
in top track

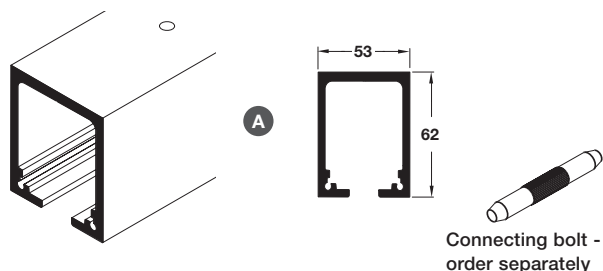


The retaining force can be  
adjusted with an allen key



> Tracks and fitting sets must be ordered  
separately, shown on page 47

## Junior 160 top track



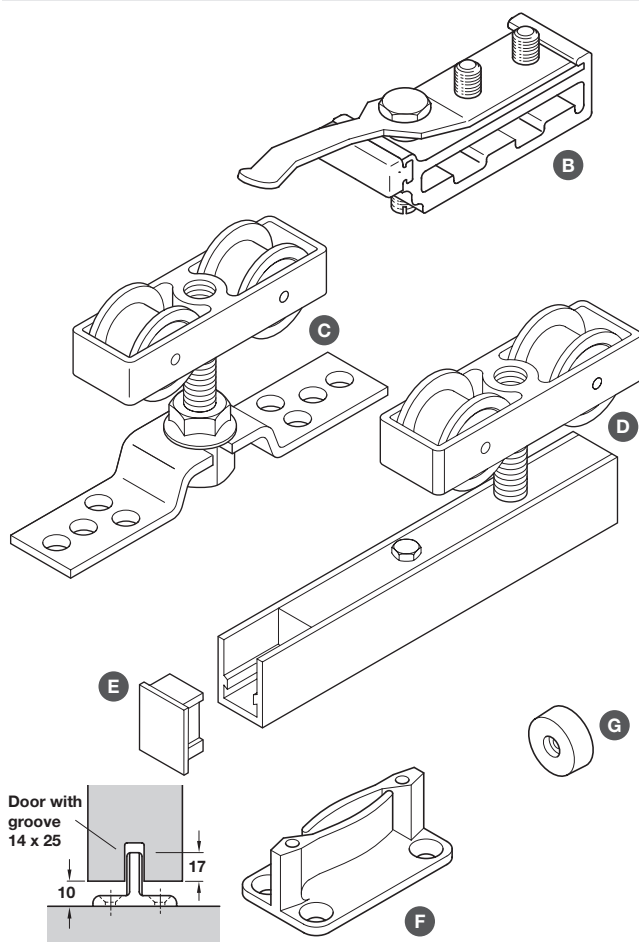
- > With screw holes for soffit fixing
- > Two top tracks are mounted side by side for double or multiple doors
- > Silver anodised aluminium
- > Order qty: 1 pc



Length	2.0 m	3.0 m
Cat. No.	941.60.200	941.60.300
Connecting bolt set for top track	942.56.090	

## HAWA-Junior 160 fitting set

- !** > If the sliding door is required to stop at both ends, we recommend installing an additional track stopper

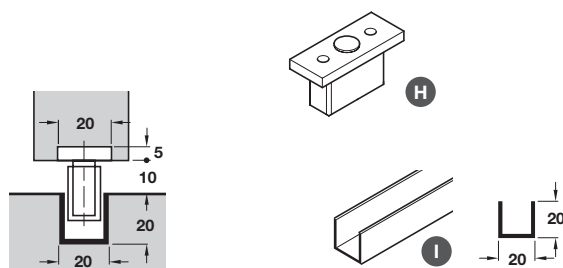


- > Fitting sets, for one door
- B Track stopper, 31 x 173 x 39 mm, for adjustable mounting in top track, zinc alloy housing, adjustable retaining force
- C HAWA-Junior 160 trolley hanger, sleeve bearing mounted Ø 54 mm high-grade polyamide tandem rollers, aluminium carriage with 126 x 35 mm zinc-alloy mounting plate, fixings included
- D HAWA-Junior 160/B trolley hanger, sleeve bearing mounted Ø 50 mm high-grade polyamide tandem rollers, with 34 x 350 x 26 mm retainer profile and suspension plate, fixings included
- E Profile plugs, grey plastic
- F Guide, for screw mounting to floor, brown plastic, 27 x 80 x 39 mm
- G Rubber buffer, Ø 29 x 11 mm, for screw fixing
- > Order qty: 1 set



Fitting set for 1 door	Junior 160	Junior 160/B
B Track stopper	1 pc	1 pc
C Junior 160 trolley hanger	2 pcs	-
D Junior 160/B trolley hanger	-	2 pcs
E Profile plugs	-	2 pcs
F Guide	1 pc	1 pc
G Rubber buffer	1 pc	1 pc
Cat. No.	941.60.001	941.60.002
<b>Additional items</b>		
Item B	941.60.041	
Item F	941.60.031	

## HAWA-Junior alternative light duty guiding with continuous aluminium channel



- > For HAWA-Junior 120/160/250
- > Recommended for doors over 1000 mm
- > H Guide, steel plate with nylon pilot, 28 x 50 x 20 mm
- > Order qty: 1 pc
- > I Channel, pre-drilled for countersunk screws, anodised aluminium
- > Order qty: 1 pc

Guide		
Item H	407.49.111	
Channel	2.5 m	3.5 m
Item I	940.41.250	940.41.350