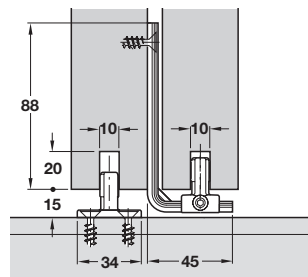
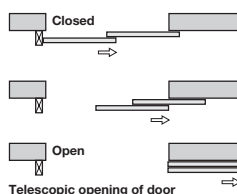
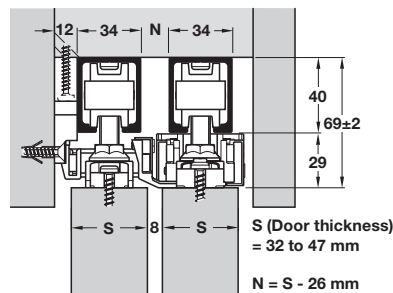


HAWA-TELESCOPIC 80/2 ADD-ON SYSTEM

To allow two panels mounted on the Junior 80 system to move simultaneously, to one side, possibly into a cavity.

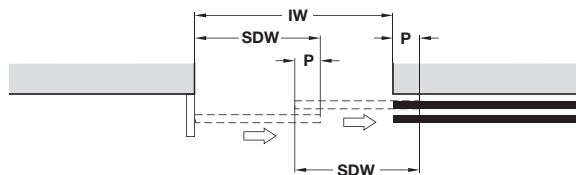
- > HAWA-Telescopic 80/2
- > Range:
 - Maximum door weight **80 kg**
 - Door thickness **32-47 mm**
 - Maximum door height **2.3 m**
 - Width of door **500-1200 mm**
- > Installation drawing reference 20660



Calculation for sliding door width

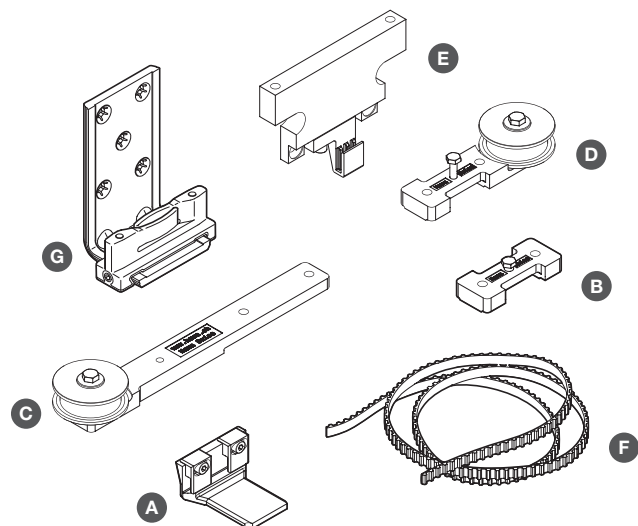
SDW = Sliding Door Width
P = Bottom guide clearance (min. 75 mm)
IW = Internal Installation Width

$$SDW = \frac{(2 \times P) + IW}{2}$$



- > HAWA-Junior 80 tracks and two fitting sets must be ordered separately, shown on page 37

HAWA-Telescopic 80/2 fitting set



- > Fittings set, for two doors
- A Belt clamp, door mounted, adjustable
- B Counterplate, door mounted
- C Guide pulley wheel, long fixing plate, door mounted
- D Guide pulley wheel, short fixing plate, door mounted
- E Belt clamp, wall or ceiling mounted
- F Toothed belt, 2.7 m length, glass-fibre reinforced, black
- G Bottom guide, door mounted, bronze coloured
- > Order qty: 1 set

Fitting set for 2 doors	Telescopic 80/2
A Belt clamp	1 pc
B Counterplate	1 pc
C Guide pulley wheel, long fixing plate	1 pc
D Guide pulley wheel, short fixing plate	1 pc
E Belt clamp	1 pc
F Toothed belt	1 pc
G Bottom guide	1 pc
Cat. No.	940.81.007