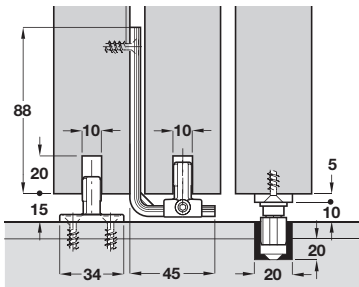
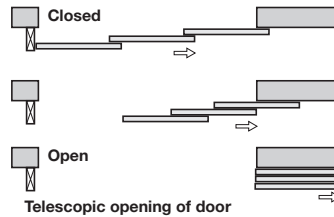
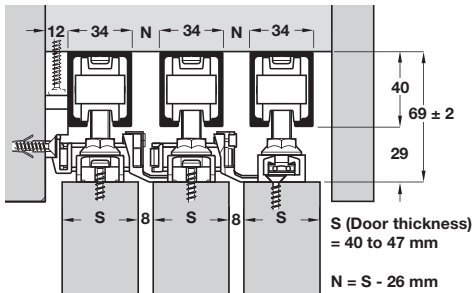


HAWA-TELESCOPIC 80/3 ADD-ON SYSTEM

To allow three panels mounted on the Junior 80 system to move simultaneously, to either side, possibly into a cavity.

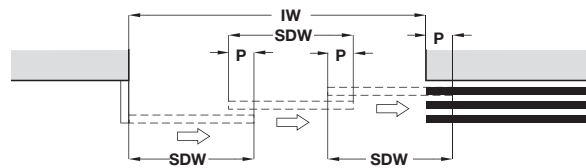
- > HAWA-Telescopic 80/3
- > Range:
 - Maximum door weight **80 kg**
 - Door thickness **40-47 mm**
 - Maximum door height **2.3 m**
 - Width of door **500-1200 mm**
- > Installation drawing reference 20660



Calculation for sliding door width

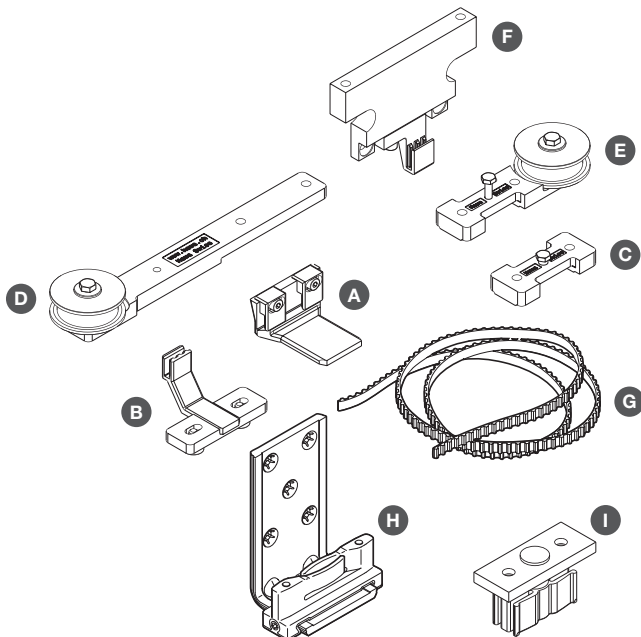
SDW = Sliding Door Width
P = Bottom guide clearance (min. 75 mm)
IW = Internal Installation Width

$$SDW = \frac{(3 \times P) + IW}{3}$$



- > HAWA-Junior 80 tracks and three fitting sets must be ordered separately, shown on page 37

Telescopic 80/3 fitting set



- > Fittings set, for three doors
 - A Belt clamp, wide, door mounted, adjustable
 - B Belt clamp, narrow, door mounted, adjustable
 - C Counterplate, door mounted
 - D Guide pulley wheel, long fixing plate, door mounted
 - E Guide pulley wheel, short fixing plate, door mounted
 - F Belt clamp, wall or ceiling mounted
 - G Toothed belt, 2.7 m length, glass-fibre reinforced, black
 - H Bottom guide, door mounted, bronze coloured
 - I Bottom guide, door mounted
- > Order qty: 1 set

Fitting set for 3 doors	Telescopic 80/3
A Belt clamp, wide	2 pcs
B Belt clamp, narrow	1 pc
C Counterplate	1 pc
D Guide pulley wheel, long fixing plate	2 pcs
E Guide pulley wheel, short fixing plate	2 pcs
F Belt clamp	1 pc
G Toothed belt	2 pcs
H Bottom guide	1 pc
I Bottom guide	1 pc
Cat. No.	940.81.008

- > Light duty guiding with continuous aluminium channel available, shown on page 47