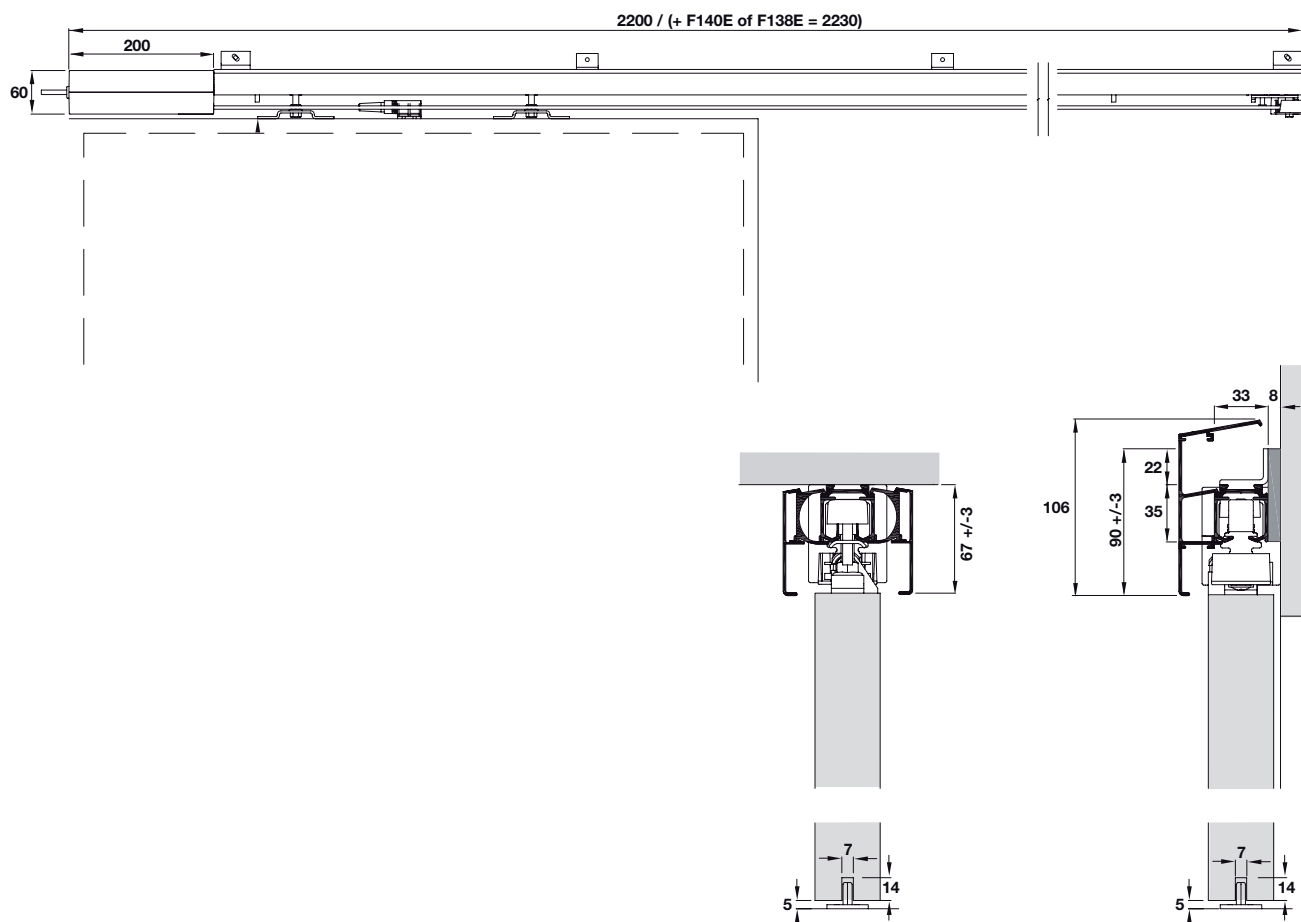


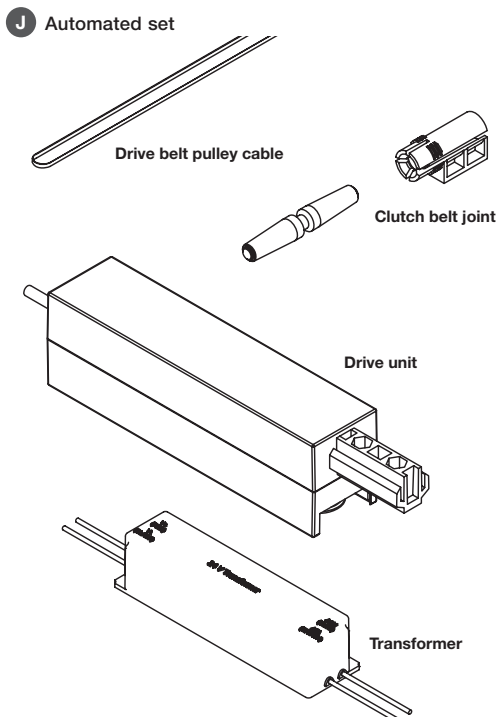
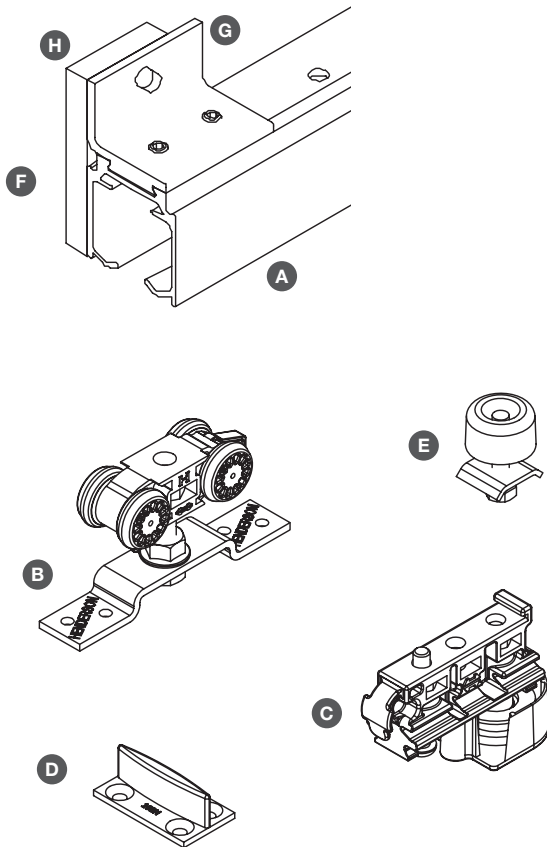
EVOLVE 80 AUTOMATED SLIDING DOOR SYSTEM

Smooth running automated sliding door hardware ideal for residential or light duty commercial applications, capable of taking internal wooden doors weighing up to 80 kg.

- > Evolve 80
- > Range:
 - Max. door height **2700 mm**
 - Max. door weight **80 kg**
 - Max. door weight (bi parting doors) **40 kg**
 - Max. door width **1100 mm**
 - For door thickness **30-50 mm**
- > Internal use only
- > Complete fitting set for single automated face fixed door or for 2 bi-parting automated doors
- > Automation includes:
 - Two manual transmitters included (one channel)
 - Drive rating 50 W
 - Operation Voltage: 24V safety- low voltage via external power unit. Protection class IP55
 - Operating speed is approximately 0.3 m/sec variable
 - Features obstacle detection
 - Can be manually decoupled from the clutch base
 - Automated closing option (adjustable to timed intervals)



Evolve 80 complete fitting set for automated doors



> Complete set for 1 face fixing sliding door, weighing up to 80 kg, or for 2 bi-parting face fixed sliding doors, weighing up to 40 kg per door, includes:

A Top track, 2.0 m length, anodised aluminium

B Hangers with apron plates

C Clipstop and tension wheel

D Bottom guide

E Track stopper

F Track spacer, face fixing

G Brackets, face fixing

H Jointing bracket

J Automated set including 1x drive unit, 1x drive belt, 1x clutch base and release pin, 1x 24V transformer, 1x terminal block

> Order qty: 1 set



Complete fitting set	for 1 door	for 2 doors
A Top track, 2.0 m length	1x 2.0 m	2x 2.0 m
B Hangers with apron plates	2 pcs	4 pcs
C Clipstop and tension wheel	1 set	1 set
D Bottom guide	1 pc	2 pcs
E Track stopper	2 pcs	4 pcs
F Track spacer	8 pcs	15 pcs
G Brackets	6 pcs	12 pcs
H Jointing bracket	2 pcs	3 pcs
J Automated set	1 set	1 set
Cat. No.	943.32.070	943.32.071