

SF-A300 SLIDING DOOR SYSTEM

Good quality economical system for large wooden panels up to 300 kg. Rollers fitted on smooth running hard wearing nylon wheels, an adjustable braking system is mounted inside the track.

> Range:

Max. door weight **300 kg**

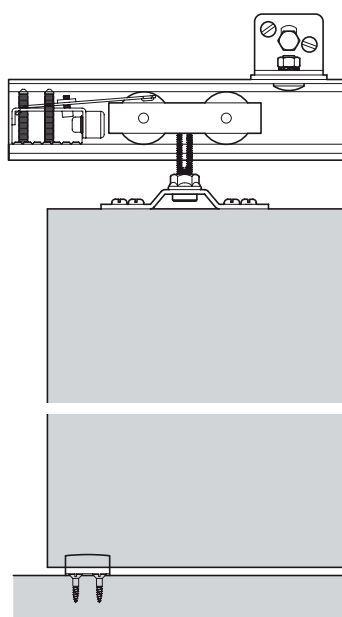
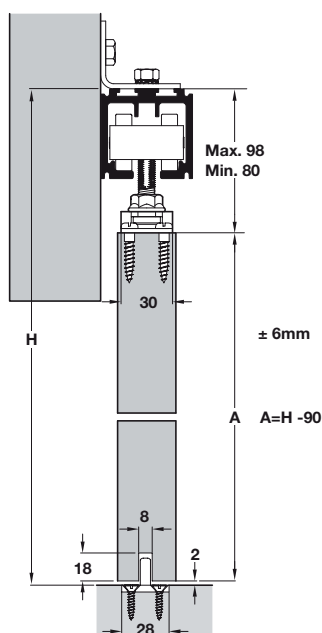
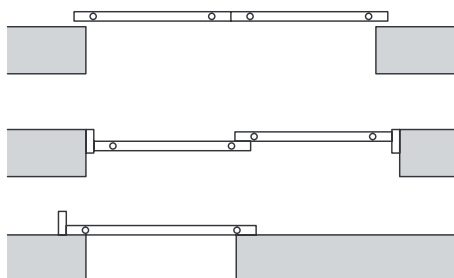
Max. door height **3000 mm**

Max. door width **1000 mm** (With standard guide)
use bottom channel for wider doors

For door thickness **30-60 mm**



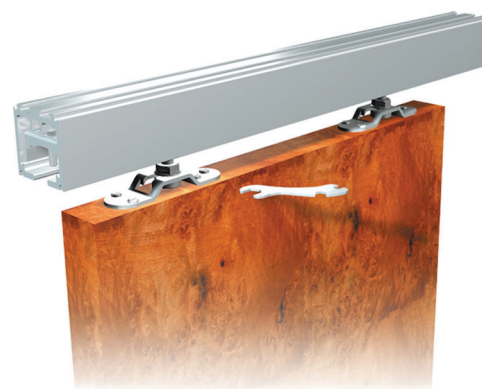
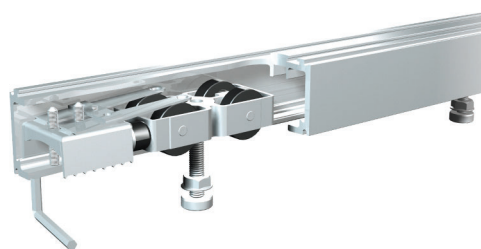
Door configurations



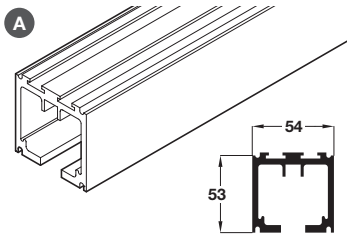
Running gear and bottom guide



> Tracks and fitting sets must be ordered separately, shown on page 83



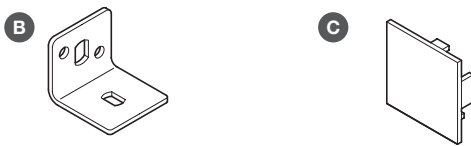
SF-A300 top track



- > Screw fixing:
- > Satin anodised aluminium
- > Order qty: 1 pc

Length	3.0 m
A Single top track	943.52.603

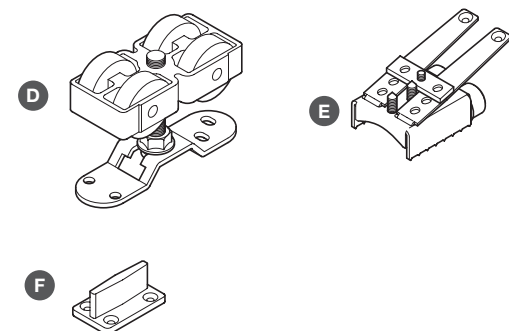
SF top track fixing bracket



- > Order fixing bracket and end caps separately
- B Fixing bracket for top track
- > Order qty: 1 pc
- C End cap, 53 x 54 x 3 mm
- > Order qty: Multiples of 2 pcs per track

Item	Cat. No.
B Fixing bracket	943.52.420
C End cap	943.52.430

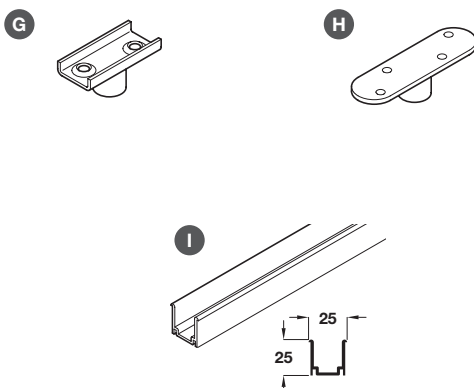
SF-A300 fitting set for one door



- > Fitting set includes:
- D Running gear and fixing plate, plastic/aluminium
- E Track stopper, satin anodised aluminium
- F Bottom guide, clear threshold, black plastic
- > Order qty: 1 set

Item	For 1 door
D Running gear	2 pcs
E Track stopper	2 pcs
F Bottom guide	1 pc
Cat. No.	943.52.000

SF-A300 alternative bottom guiding



- > Alternative bottom guiding option with channel
- G Bottom guide, for recess mounting into bottom edge of door, screw fixing, steel/plastic
- H Bottom guide, for surface mounting into bottom edge of door, screw fixing, steel/plastic
- I Bottom channel, screw fixing, satin anodised aluminium
- > Order qty: 1 pc

Item	Cat. No.
G Bottom guide roller, recess mounting	943.52.200
H Bottom guide roller, surface mounting	943.52.201
I Bottom guide channel	943.03.803