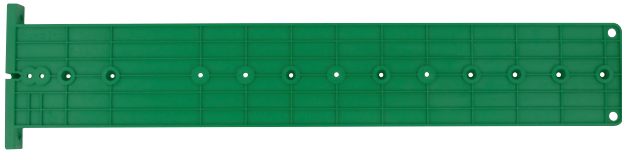


1

# INSTALLATION TOOLS

For use with Nova Pro Scala system drawers.

## Nova Pro drilling jig for cabinet member



- > Drilling jig for Nova Pro drawer runners
- > For use with drill bit 001.42.030
- > Green plastic
- > Order qty: 1 pc

	Cat. No.
Drilling jig	558.18.125

## Marking jig set



- > For accurate marking of the holes for the Nova Pro installation hooks
- > Order qty: 1 set

For use with	Cat. No.
Nova Pro 63 mm	558.18.072
Nova Pro 90 and 122 mm	558.18.070
Nova Pro Scala 186 and Crystal Plus	551.90.925
Nova Pro Crystal	558.18.074

## Connector

Ø 8 mm bolt

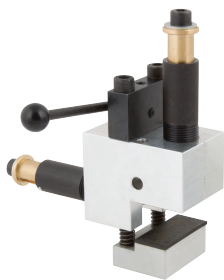


Ø 15 mm housing

- > For connecting front to bottom of drawer, required for drawer over 600 mm wide
- > Order qty: 1 pc

	Cat. No.
Connector (housing and bolt)	558.20.795

## Drilling jig set



- > For drilling the bottom panel of extra wide drawers when using front bottom connector
- > Set consists of: 1x Drilling jig, 1x Market jig, 1x Drill bits Ø 8 and Ø 15 mm, 1x Drilling machine bit, 1x Allen key 3 mm, 1x Allen key 4 mm
- > Order qty: 1 set

	Cat. No.
Drilling jig set	558.18.141

## Drilling jig for inset panel



- > For pre-drilling the Nova Pro Scala inset drawer front panel
- > Order qty: 1 pc

	Cat. No.
Drilling jig	551.90.929