

SMEG 50'S RETRO STYLE REFRIGERATION



DATA SHEET 2013, © Häfele U.K. Ltd 2013. Dimensional data not binding. We reserve the right to alter specifications without notice.

SMEG 50'S RETRO STYLE FRIDGE FREEZERS

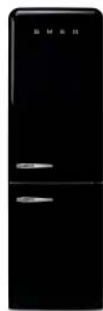


Smeg 50's Retro style fridge-freezer



Cream finish, left hand hinge

Cream finish, right hand hinge



Red finish

Black finish

White finish



Pale blue finish

Pale green finish

Pink finish

PART NUMBERS REMOVED
536.14.080
536.14.077
536.14.087

- > Dimensions: 1968 mm high x 600 mm wide x 592 mm depth (excluding door and handles)
- > Frost free
- > 2 adjustable thermostats
- > Auto defrost
- > Thaw time: 40 hours
- > Handed hinging
- > Total capacity 365 litres (gross)
- > Fridge capacity: 204 litres
- > Freezer capacity: 97 litres
- > Freezing capacity: 5 kg/24h
- > Fridge compartment includes:
 - 3x adjustable glass shelves
 - 1x fruit and vegetable container
 - 1x covered storage box
 - Life plus zone -0°C with electronic control
 - LED internal light
- > Freezer compartment includes:
 - 2x drawers
 - 1x fast freezing drawer
 - 1x ice cube tray
- > Rear panel material: Flame retardant aluminium foil
- > Order qty: 1 pc



A gap of 175 mm must be left on the hinged side of the appliance to allow the door to open



2 Year Warranty

Finish	Model No.	Cat. No.	Right hand hinge		Left hand hinge	
			Model No.	Cat. No.	Model No.	Cat. No.
Cream	FAB32RCR3UK	536.14.075	FAB32LCR3UK	536.14.085		
Red	FAB32RRD3UK	536.14.079	FAB32LRD3UK	536.14.089		
Black	FAB32RBL3UK	536.14.071	FAB32LBL3UK	536.14.081		
Pale blue	FAB32RPB3UK	536.14.078	FAB32LPB3UK	536.14.088		
Pale green	FAB32RPG3UK	536.14.070	-	-		
Pink	FAB32RPK3UK	536.14.076	FAB32LPK3UK	536.14.086		
White	FAB32RWH3UK	536.14.310	FAB32LWH3UK	536.14.311		