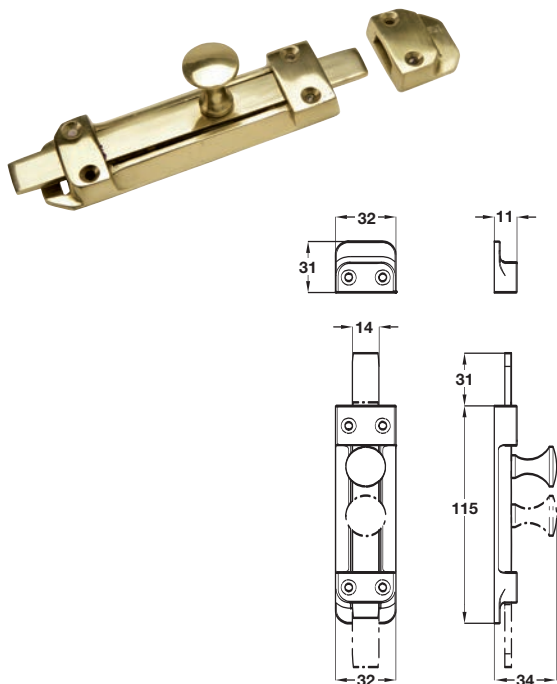


Knob slide action surface bolt, brass



Note: ±3 mm tolerance on dimensions

- > Face fixing
- > Staple included
- > Brass
- > Order qty: 1 pc

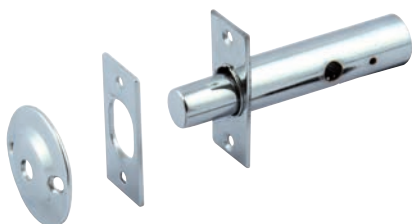


Polished brass Polished chrome Satin nickel

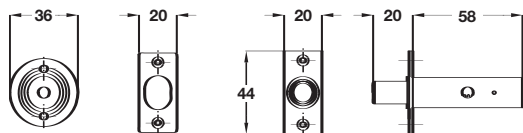


Finish	Cat. No.
Polished brass	911.62.651
Chrome plated	911.62.655
Satin nickel	911.62.799

Mortice door security bolt, brass

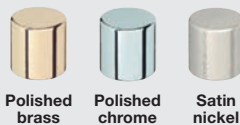


> Order key separately, Cat. No. 911.62.275 shown below



Note: ±3 mm tolerance on dimensions

- > Key turn operated (key not included)
- > To suit doors up to 44 mm thick
- > Backset 32 mm
- > Comprises:
 - 1x Bolt,
 - 1x Strike plate
 - 1x Escutcheon
- > Brass/Steel
- > Order qty: 1 pc



Polished brass Polished chrome Satin nickel



Finish	Cat. No.
Polished brass	911.62.320
Polished chrome	911.62.321
Satin nickel	911.62.322

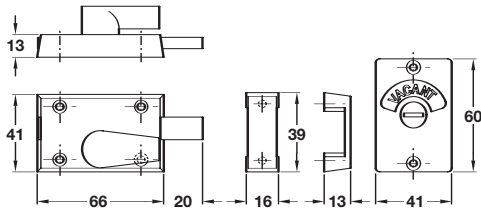
Security bolt key



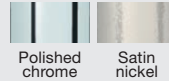
- > To suit all rack security bolts
- > Order qty: 1 pc

	Cat. No.
Security bolt key	911.62.275

Indicator bolt



- > Surface mounted
- > To suit doors 28-48 mm thick
- > Emergency release to outside
- > Throw over turn knob to inside
- > Zinc alloy
- > Order qty: 1 pc



Polished
chrome

Satin
nickel



Finish	Cat. No.
Polished chrome	911.62.814
Satin nickel	911.62.815