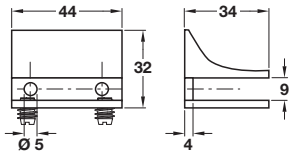
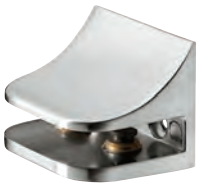




Shelf clamp support, screw fixing

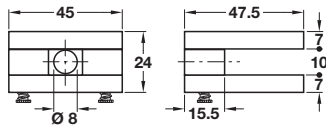


- > For 6-8 mm shelf thickness
- > Zinc alloy
- > Order qty: Multiples of 2 pcs*



Finish	Cat. No.
Stainless steel	284.01.073

Shelf clamp support, screw fixing



- > For 8 mm shelf thickness
- > Zinc alloy
- > Order qty: 1 pc*



Finish	Cat. No.
Stainless steel	284.01.081
RAL 9006 silver coloured	284.01.981
Polished chrome-plated	284.01.281



- > The load capacity of the shelf support is dependent on:
 - Shelf material
 - Shelf depth
 - Properties and condition of wall
- > *More than 2 pcs may be required per shelf depending on shelf weight and dimensions