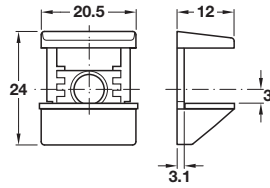


## Shelf clamp support, screw fixing



- > For screw fixing in  $\varnothing 3$  or  $\varnothing 5$  mm drilled holes
- > Lifting and clamping device prevents glass shelf from tipping, lifting or coming out
- > For 6, 8 and 10\* mm glass thicknesses (\*For 10 mm glass the top rubber part needs to be removed)
- > Zinc alloy with plastic insert for glass
- > Order qty: 1 pc\*



> Plug in version also available, shown on page 29

Finish  
Nickel-plated

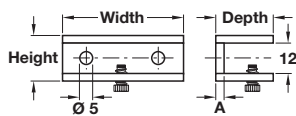
Cat. No.  
282.13.600

## Shelf clamp support, screw fixing



- > For 5-8 mm or 8-10 mm shelf thickness
- > Zinc alloy
- > Order qty: Multiples of 2 pcs\*

Size	Shelf thickness	A	Depth	Width	Height
Small	5-8 mm	3.3 mm	17 mm	36 mm	16 mm
Large	8-10 mm	3.8 mm	21 mm	47 mm	18 mm



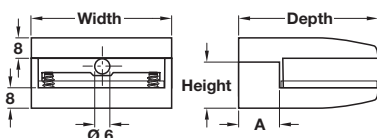
Finish	Small	Large
Stainless steel	284.01.041	284.01.043
Polished chrome-plated	284.01.241	284.01.243

## Shelf clamp support, screw fixing



- > For 8-10 mm shelf thickness
- > Zinc alloy
- > Order qty: Multiples of 2 pcs\*

Size	Shelf thickness	A	Depth	Width	Height
Medium	6-8 mm	20 mm	52 mm	41 mm	25 mm
Large	8-10 mm	18 mm	55 mm	55 mm	25 mm



Finish	Medium	Large
Stainless steel	284.01.092	284.01.093
Polished chrome-plated	-	284.01.293



> \*More than 2 pcs may be required per shelf depending on shelf weight and dimensions