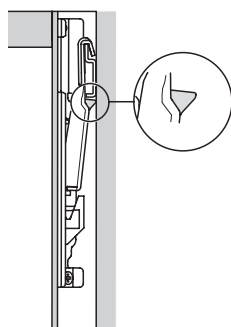
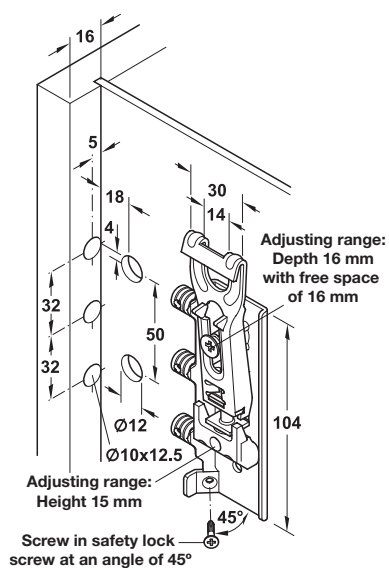


## Concealed cabinet hanger, press-fit dowels/screw mounting

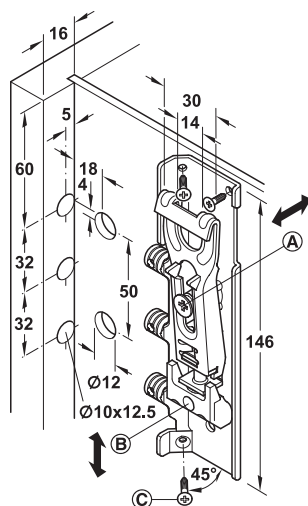


Hook-off protection

- > Cabinet hanger concealed behind rear panel, only cover caps visible inside the cabinet
- > Min. space required behind rear panel: 16 mm
- > Handed
- > Load carrying capacity 130 kg per pair
- > Two-way adjustment, height and depth of the hanging cabinet conveniently from the front:
  - Height adjustment 15 mm
  - Depth adjustment max. up to 16 mm (depending on free space behind rear panel)
- > Automatic hook-off protection by surrounding the rail, no extra "locking" required
- > With transportation aid: wall rail can be locked between arm and plate for transport
- > Galvanized steel with RAL 9010 white plastic trim caps
- > Order qty: 1 pc (order 1 left and 1 right hand pc)



With short base plate



With long base plate



Wall plate or rail must be ordered separately,  
shown on page **78B**



| Version               | Left       | Right      |
|-----------------------|------------|------------|
| With short base plate | 290.03.936 | 290.03.935 |
| With long base plate  | 290.03.938 | 290.03.937 |



> For safety reasons, the cabinet hangers must be fitted in the upper third of the cabinet