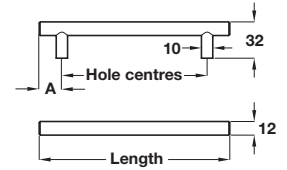
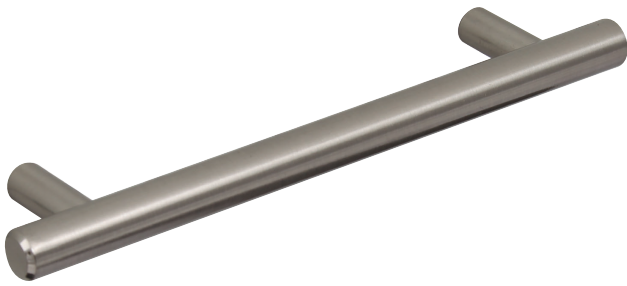


BARKSTON bar handle, Ø 12 mm



- > 2 each of M4 x 45 mm snap off handle screws included (115.71.602 includes additional 2x M4 x 25 mm screws)
- > *Order fixing screws separately
- > Steel
- > Order qty: 1 pc

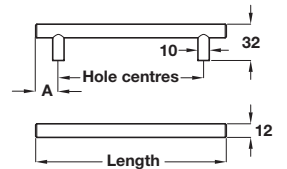
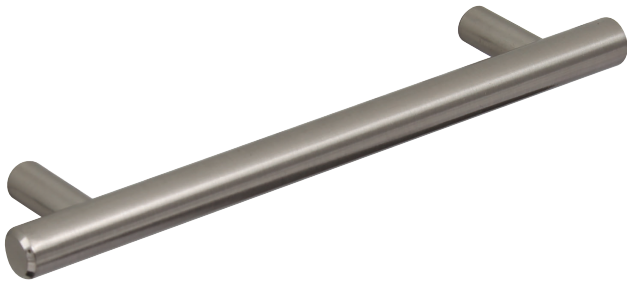


Length	Hole centres	Dim. A	Stainless steel effect
136 mm	96 mm	20 mm	115.71.601*
168 mm	128 mm	20 mm	115.71.602
226 mm	156 mm	35 mm	101.20.721
230 mm	160 mm	35 mm	115.71.603
232 mm	192 mm	20 mm	115.71.631*
326 mm	256 mm	35 mm	101.20.702
376 mm	306 mm	35 mm	101.20.723
426 mm	356 mm	35 mm	101.20.704*
526 mm	456 mm	35 mm	101.20.705*
702 mm	632 mm	35 mm	101.20.706*
828 mm	758 mm	35 mm	101.20.727*

4

Furniture Handles: Sleek and Simple

BARNABUS bar handle, Ø 12 mm



- > 2 each of M4 x 45 mm snap off handle screws included (117.67.642* includes an additional 1x M4 x 45 mm screw)
- > Steel
- > Order qty: 1 pc



Length	Hole centres	Dim. A	Stainless steel effect
188 mm	128 mm	30 mm	117.67.630
237 mm	177 mm	30 mm	117.67.631
337 mm	277 mm	30 mm	117.67.632
387 mm	327 mm	30 mm	117.67.633
437 mm	377 mm	30 mm	117.67.634
510 mm	450 mm	30 mm	117.67.635
537 mm	477 mm	30 mm	117.67.636
655 mm	595 mm	30 mm	117.67.637
737 mm	677 mm	30 mm	117.67.638
835 mm	775 mm	30 mm	117.67.639
920 mm	860 mm	30 mm	117.67.640
Additional centre support			
1185 mm	560 mm	32.5 mm	117.67.642*

TCH DESIGN 2017, © Hafele U.K. Ltd 2017. Dimensional data not binding. We reserve the right to alter specifications without notice.