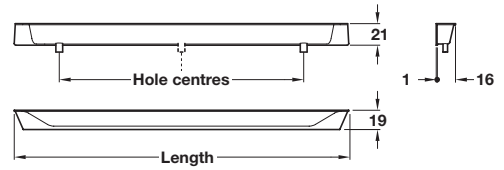
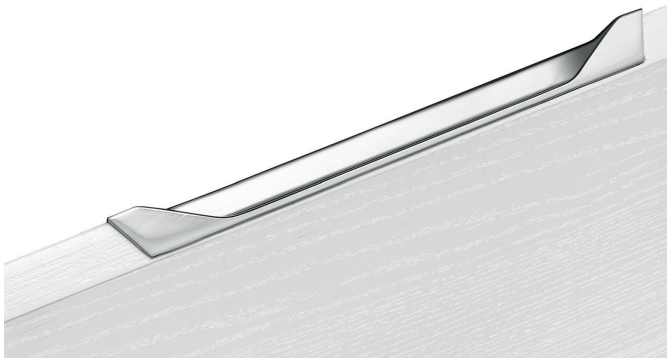


SINTESI Inset handle



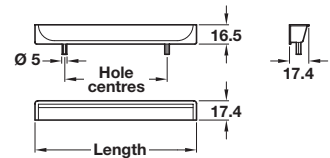
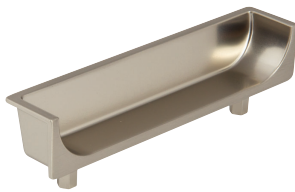
- > Order M4 handle screws separately
- > Zinc alloy
- > Order qty: 1 pc



Length	Hole centres	Polished chrome
200 mm	128 mm	111.44.282

HIDE Inset handle

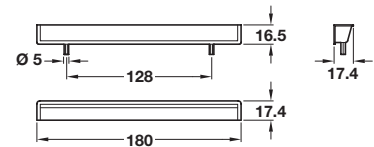
4



- > Ø 5 mm lugs
- > Zinc alloy
- > Order qty: 1 pc

Length	Hole centres	Stainless steel effect
90 mm	64 mm	151.47.663

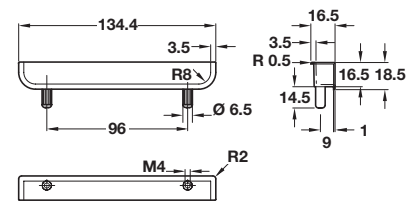
HIDE Inset handle



- > Ø 5 mm lugs
- > Zinc alloy
- > Order qty: 1 pc

Finish	Cat. No.
Stainless steel effect	151.47.662
Matt white	151.47.664
Matt black	151.47.665

KATO inset handle



- > Press fit with Ø 6.5 mm lugs
- > Zinc alloy, pol. stainless steel effect with brushed edges
- > Order qty: 1 pc



Length	Hole centres	Cat. No.
134.4 mm	96 mm	126.54.090

TOH DESIGN 2017, © Häfele U.K. Ltd 2017. Dimensional data not binding. We reserve the right to alter specifications without notice.

PAGE AMENDED
08.06.18/1