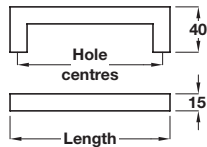


## HARGRAVE D handle

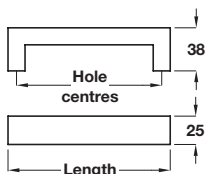
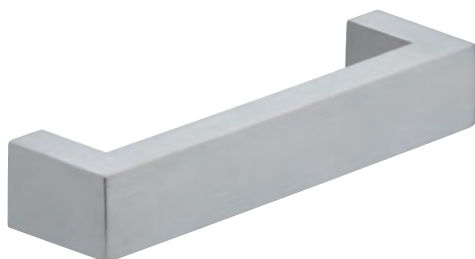


- > 2x M4 x 45 mm snap off handle screws included
- > Brushed stainless steel
- > Order qty: 1 pc



Length	Hole centres	Cat. No.
141 mm	128 mm	100.45.061
173 mm	160 mm	100.45.062
205 mm	192 mm	100.45.063
269 mm	256 mm	100.45.065
333 mm	320 mm	100.45.067
461 mm	448 mm	115.41.011

## FENWICK D handle

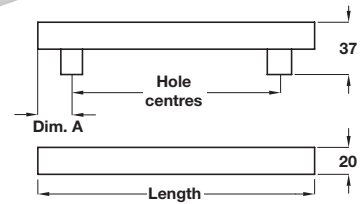
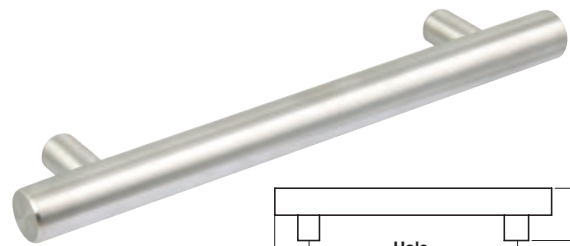


- > 2x M4 x 45 mm snap off handle screws included
- > Brushed stainless steel
- > Order qty: 1 pc



Length	Hole centres	Cat. No.
143 mm	128 mm	100.48.051
175 mm	160 mm	100.48.052
207 mm	192 mm	100.48.053

## INDIA bar handle, Ø 20 mm

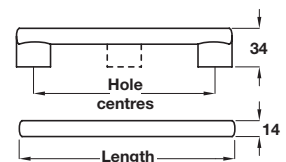


- > Order M4 handle screws separately
- > Stainless steel
- > Order qty: 1 pc



Length	Hole centres	Dim. A	Cat. No.
156 mm	96 mm	30 mm	107.64.001
188 mm	128 mm	30 mm	107.64.002
220 mm	160 mm	30 mm	107.64.003
252 mm	192 mm	30 mm	107.64.004
284 mm	224 mm	30 mm	107.64.005
344 mm	284 mm	30 mm	107.64.006
444 mm	384 mm	30 mm	107.64.008
544 mm	484 mm	30 mm	107.64.011
655 mm	595 mm	30 mm	107.64.013
Additional centre support			
835 mm	775 mm	30 mm	107.64.015

## BAYSWATER bar handle



- > Order M4 handle screws separately
- > Brushed stainless steel bar with stainless steel effect zinc alloy feet
- > Order qty: 1 pc



Length	Hole centres	Cat. No.
158 mm	128 mm	108.64.001
190 mm	160 mm	108.64.002
222 mm	192 mm	108.64.003
254 mm	224 mm	108.64.000
318 mm	288 mm	108.64.005
478 mm	448 mm	108.64.008