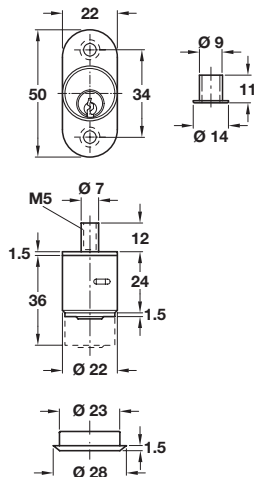


Push-button cylinder, Ø 22 mm



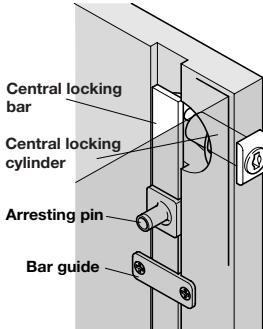
- > Lock; by pushing in the cylinder
- > Unlock; by turning the key
- > 5 pairs of pin tumblers = 10,000 possible key changes
- > Locking pin with M5 internal thread
- > Matt nickel-plated zinc alloy case and brass cylinder
- > Accessories: 2x keys, 1x cylinder rosette and 1x locking socket
- > Order qty: 1 pc



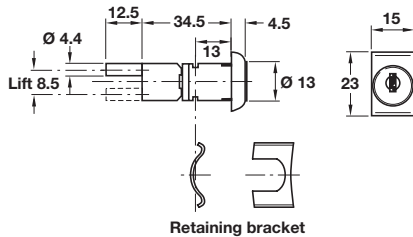
Central locking accessories, bar guides and arresting pins are shown on pages **112-113**

Key type	Cat. No.
Random key changes	234.58.602
Keyed alike: Key change	
H1	234.58.611
H2	234.58.620

Central locking rotary cylinder

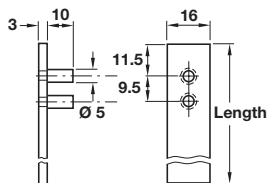


- > Ø 13 mm cylinder
- > Indirect action
- > For installation in cabinet side panel min. 19 mm
- > Key closure travel 180°
- > Lifting pin closure travel 180°
- > Key can be removed in locked or unlocked position
- > 5 plate levers = 200 possible key changes
- > Bright zinc alloy case
- > Matt nickel-plated zinc alloy cylinder
- > Accessories: 2 keys
- > Order qty: 1 pc



Key type	Cat. No.
Random key changes	234.76.600
Keyed alike: Key change	
FH1	234.76.619

Central locking bar



- > For use with central locking rotary cylinder Cat. No. 234.76.600/619, shown above
- > Bright steel
- > Order qty: 1 pc

Length	Cat. No.
600 mm	237.09.533
800 mm	237.09.551