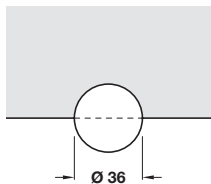


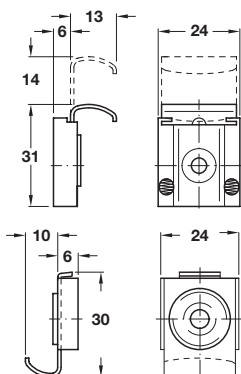
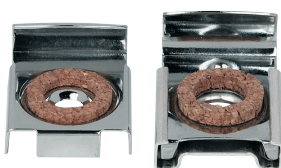
Mirror edge clip



- > For mirrors 4-5 mm thick
- > For attaching mirrors to wood or walls
- > Black nylon with steel cover cap
- > Order qty: 1 pc

Finish	Cat. No.
Polished stainless steel	291.07.001

Mirror clip set



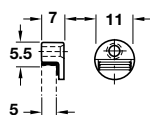
- > For frameless mirror
- > Load carrying capacity 15 kg
- > Consists of:
 - 2x rigid supporting clamps
 - 2x holding clamps with springs
 - 4x plastic wall plugs, drill hole Ø 6 mm
 - 4x Ø 3.5 mm wood screws
- > Brass
- > Order qty: 1 set



Load carrying capacity applies to 4 clips per mirror

Finish	Cat. No.
Chrome-plated	293.50.025

Mirror clip

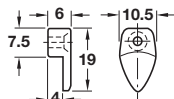


- > Round
- > With rubber pad
- > Zinc alloy
- > Order qty: Multiples of 100 pcs



Finish	Cat. No.
Nickel-plated	292.01.710

Mirror clip



- > Oval
- > Plastic
- > Order qty: Multiples of 100 pcs



Finish	Cat. No.
Transparent	291.09.402



Hospa screws are shown in **Section 13** pages **8-16**