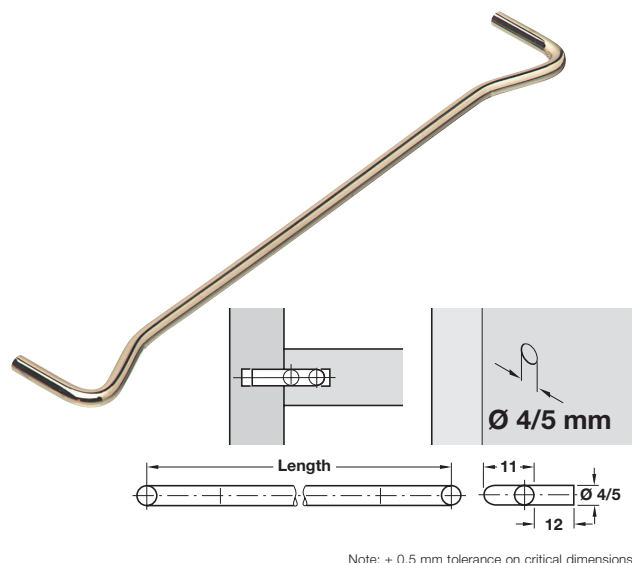


## Swedish type shelf support, plug in, for Ø 4/5 mm holes

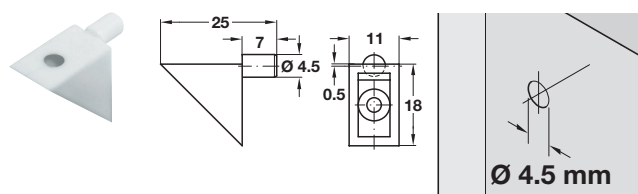


- > Plugs into two drill holes
- > For Ø 4 mm or Ø 5 mm holes
- > Provides invisible mounting for grooved shelf
- > Nickel-plated steel wire
- > Order qty: Multiples of 10 pcs



| Length | Ø 4 mm     | Ø 5 mm     |
|--------|------------|------------|
| 160 mm | 282.72.700 | 282.73.707 |
| 224 mm | 282.72.719 | 282.73.716 |
| 320 mm | 282.72.728 | 282.73.725 |

## Shelf support, plug in, for Ø 4.5 mm holes

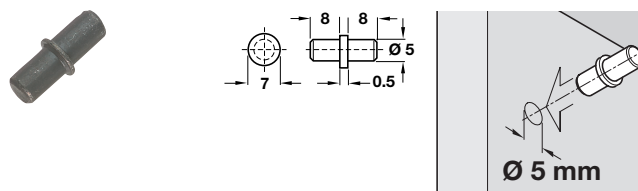


- > Provides additional screw-fixing of side panel and shelf
- > For Ø 4.5 mm hole
- > Plastic
- > Order qty: Multiples of 100 pcs



| Finish | Cat. No.   |
|--------|------------|
| White  | 283.50.709 |

## Shelf support, plug in, for Ø 5 mm holes

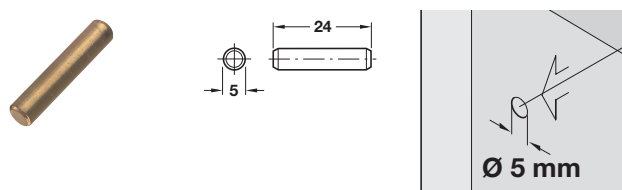


- > With collar
- > For Ø 5 mm hole
- > Load carrying capacity 80 kg\*
- > Steel
- > Order qty: Multiples of 100 pcs



| Finish   | Bronzed    | Bright galvanized |
|----------|------------|-------------------|
| Cat. No. | 282.43.101 | 282.43.905        |

## Shelf support, plug in, for Ø 5 mm holes



- > For side panel installation
- > For Ø 5 mm hole
- > Load carrying capacity 80 kg\*
- > Steel
- > Order qty: Multiples of 100 pcs



| Finish   | Brass-plated | Nickel-plated |
|----------|--------------|---------------|
| Cat. No. | 282.40.502   | 282.40.708    |



\*Load carrying capacity applies to 4 shelf supports bearing an evenly distributed load. Testing was carried out according to DIN EN 1727: 1998-06 "Mechanical safety requirements for shelf supports"