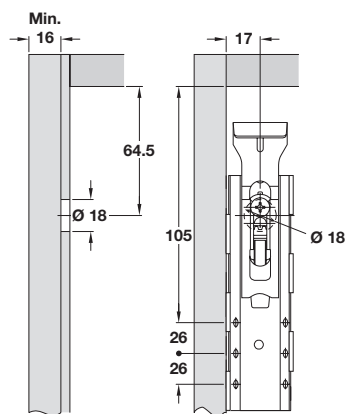


7

# CABINET HANGERS AND FITTINGS

For hanging wall units.

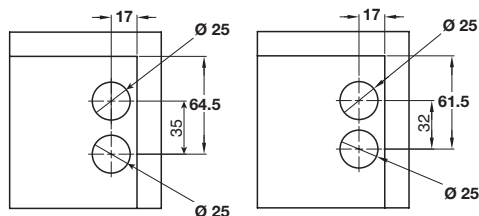
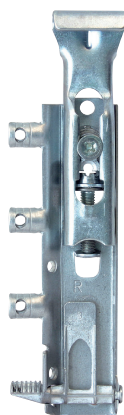
## Traser-6 Cabinet hanger, screw fixing



- > Screw fixing
- > Vertical adjustment: 18 mm
- > Horizontal adjustment: 18 mm
- > Load carry capacity: 50 kg per hanger
- > Zinc-plated steel
- > Order qty: 1 pc

Handed	Cat. No.
Unhanded	290.28.900

## Traser-6 cabinet hanger, rapid fitting

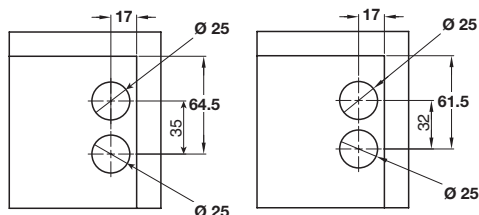


Rear drilling pattern for active safety version.  
Two possibilities.

- > Dowel fixing
- > Active safety version impedes any involuntary removal of top hanging cabinets
- > Height adjustment: 18 mm
- > Front adjustment: 18 mm
- > Side adjustment: 18 mm
- > Load carry capacity: 50 kg per hanger
- > Zinc-plated steel
- > Order qty: 1 pc

Handed	Cat. No.
Left	290.28.916
Right	290.28.915

## Traser-6 cabinet hanger, screw fixing



Rear drilling pattern for active safety version.  
Two possibilities.

- > Screw fixing
- > Active safety version impedes any involuntary removal of top hanging cabinets
- > Height adjustment: 18 mm
- > Front adjustment: 18 mm
- > Side adjustment: 18 mm
- > Load carry capacity: 50 kg per hanger
- > Zinc-plated steel
- > Order qty: 1 pc

	Cat. No.
Screw fixing	290.28.905



Load capacity shown is per hanger under Type A application according to EN 15939 standard