

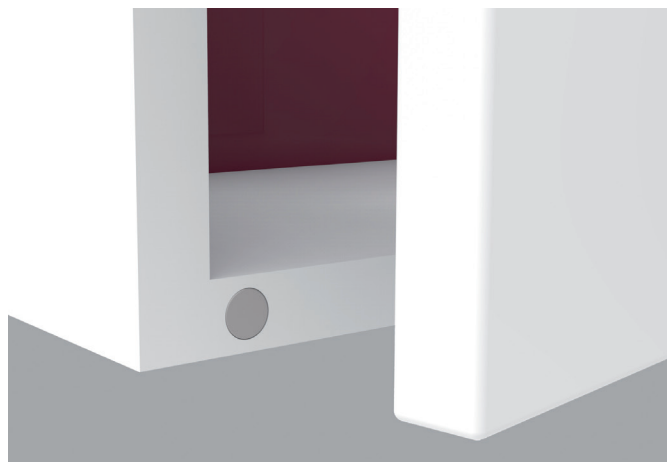
# FLUSH MAGNETIC CATCHES

An elegant solution.

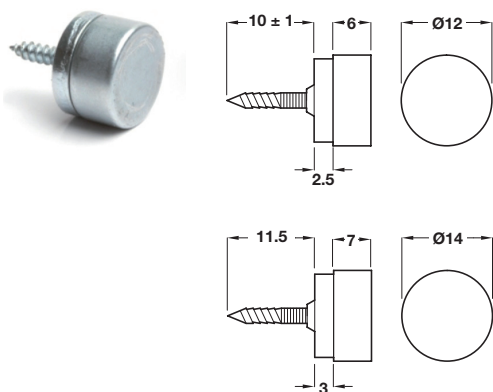
8

Cabinet Locks, Catches and Bolts: Catches

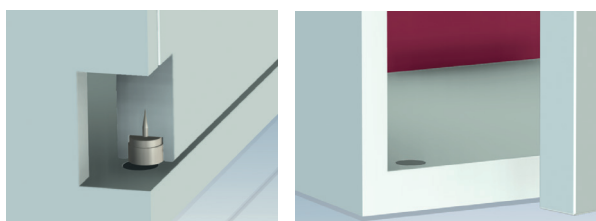
- > These high quality magnetic catches are:  
Concealed from view  
Constructed to provide a flush fit to any door of frame  
Able to hold in-frame doors securely and quietly
- > The catches can be mounted within the woodwork so they are just visible, or mounted sub-flush so they can be totally invisible after filling and finishing
- > With any magnets the greater the gap between them the weaker the attractive force will become - e.g. with a 2 mm gap between the magnets there is a 2 kg pull
- > For best results we recommend **all** flush magnets are bonded into their fixing hole with a suitable contact adhesive



## Elite magnetic catch, screw fixing



- > Magnet to be glued into a hole:  
2 kg pull version to be glued into a Ø 12 hole  
4 kg pull version to be glued into a Ø 14 hole
- > For a minimum wood thickness of 19 mm (unless the screw is removed)
- > One set consists of:  
1x North magnet  
1x South magnet
- > Neodymium
- > Order qty: Multiples of 5 sets



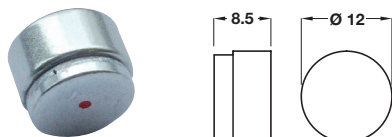
### Installation note:

The spike is there for alignment only, not for screw fixing.  
Drill a pilot hole deep enough for the magnet and spike, glue fix and press the magnet in



Pull (approx.)	2 kg	4 kg
Finish	Cat. No.	
Nickel	246.24.600	246.24.601

## Elite magnetic catch, push fix



- > Magnet to be glued into Ø 12 mm hole
- > For a minimum wood thickness of 10 mm
- > Pull = 2 kg across a 2 mm gap
- > North half - Door mounting
- > South half - Cabinet mounting
- > Neodymium
- > Order qty: Multiples of 10 pcs



For suitable adhesives to fix these magnets see **Section 13** pages **91-92**

Magnet type	North	South
Finish	Cat. No.	
Nickel	246.24.605	246.24.606

PAGE AMENDED  
14.10.22/2