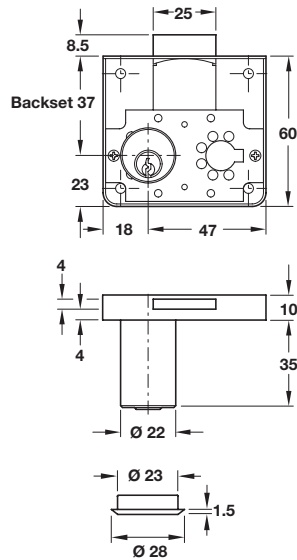


Rim lock with extended cylinder



- > With Ø 22 mm cylinder
- > Backset: 37 mm
- > Screw fixing
- > For drawer use but can be adapted for left or right hand
- > 5 pairs of pin tumblers = 20,000 possible key changes
- > Polished nickel-plated steel case
- > Matt nickel-plated brass cylinder
- > Accessories: 2x keys and 1x cylinder rosette
- > Order qty: 1 pc



230.01.701 REPLACED BY 230.01.500
 230.01.710 REPLACED BY 230.01.501



*For master key systems please state left hand, right hand or drawer lock, how many random keys and how many master keys are required



- > A guide to master key and general master key systems is shown on page 7
- > Strike plates are shown on pages 93-95
- > Hospa screws are shown in Section 13 pages 8-16

Standard keying	
Version	Drawer
Random key changes (no master key possible)	
	230.01.500
Keyed alike (master key possible - custom master keying below)	
Key change H1	230.01.501
Custom master keying*	
	Cat. No.
With general master key system	230.01.799

PAGE AMENDED
 12.03.18/1