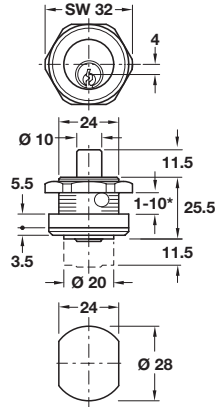


Push-button cylinder, Ø 20 mm



- > Lock; by pushing in the cylinder
- > Unlock; by turning the key
- > 5 pairs of pin tumblers = 100,000 possible key changes
- > Locking pin for metal doors from 1 to 10 mm
- > Matt nickel-plated brass case and cylinder
- > Accessories: 2x keys, 1x nut and 1x washer
- > Order qty: 1 pc

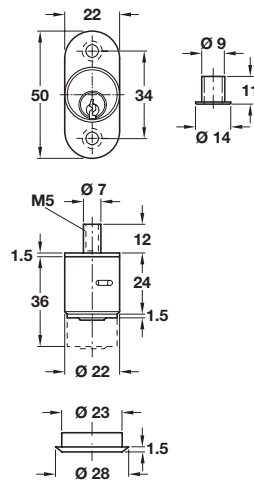
234.54.659 REPLACED BY **234.54.200**
 234.54.661 REPLACED BY **234.54.201**

| Standard keying | Cat. No. |
|---|------------|
| Random key changes (no master key possible) | 234.54.200 |
| Keyed alike (master key possible - custom master keying below) | |
| Key change H1 | 234.54.201 |
| Custom master keying* | Cat. No. |
| With master key system | 234.54.698 |
| With general master key system | 234.54.699 |



*For master key systems please state left hand, right hand or drawer lock, how many random keys and how many master keys are required

Push-button cylinder, Ø 22 mm



- > Lock; by pushing in the cylinder
- > Unlock; by turning the key
- > 5 pairs of pin tumblers = 10,000 possible key changes
- > Locking pin with M5 internal thread
- > Matt nickel-plated zinc alloy case and brass cylinder
- > Accessories: 2x keys, 1x cylinder rosette and 1x locking socket
- > Order qty: 1 pc

234.58.602 REPLACED BY **234.58.200**
 234.58.611 REPLACED BY **234.58.201**
 234.58.620 REPLACED BY **234.58.202**



| {Key type | Cat. No. |
|--------------------------------|------------|
| Random key changes | 234.58.200 |
| Keyed alike: Key change | |
| H1 | 234.58.201 |
| H2 | 234.58.202 |



Master key system is available to special order only

