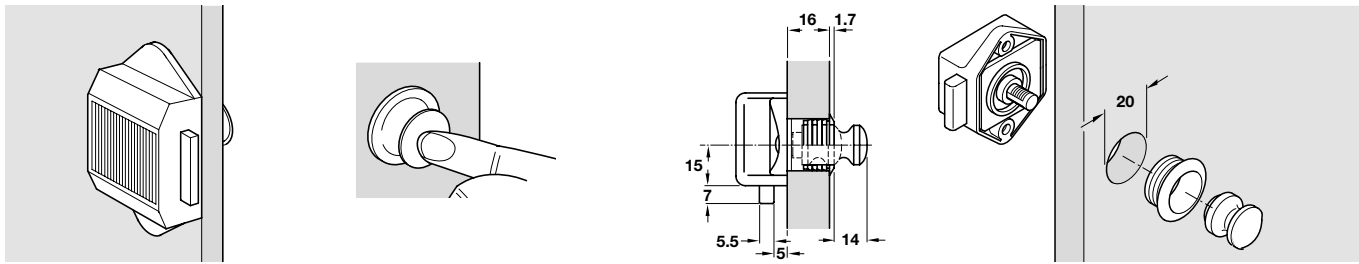
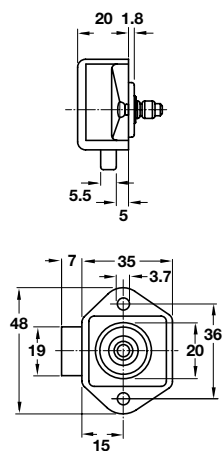


MINI PUSH-LOCK



Mini Push-Lock case

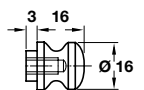


- > Backset: 15 mm
- > Suitable for 16 mm board thickness
- > Unhanded
- > Closes almost flush to the front of the door
- > Plastic lock case with metal mechanism
- > Order knob and rosette separately
- > Order qty: 1 pc



Finish	Cat. No.
Black	211.61.300
Brown	211.61.106
White	211.61.704
Matt nickel	211.61.606

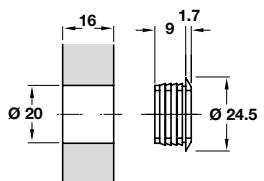
Mini Push-Lock knob



- > Plastic
- > Order lock case and rosette separately
- > Order qty: Multiples of 10 pcs

Finish	Cat. No.
Polished brass	229.07.802
Matt nickel	229.07.606
Polished chrome	229.01.211

Mini Push-Lock rosette



- > Plastic
- > Order lock case and knob separately
- > Order qty: Multiples of 10 pcs

Finish	Cat. No.
Polished brass	229.09.806
Matt nickel	229.09.600
Polished chrome	229.03.241

TCH TECHNOLOGY 2018. © Häfele U.K. Ltd 2018. Dimensional data not binding. We reserve the right to alter specifications without notice.

PAGE AMENDED
18.09.20/1