

A Variant-C central locking bar for containers

- For screw mounting of 2 or 3 Variant-C drawers
- With screw on bearings, bright zinc alloy
- 3 locking units and 2 black plastic bar guides (loosely packed)
- See page 32 for dimension requirements
- Galvanized steel bar

HE	Intervals	Installation	Cat. No. height
8	1 - 2 - 2.5 - 2.5	496 mm	● 237.81.341
8	1 - 2 - 2 - 3	496 mm	237.81.343
8.5	1 - 2.5 - 2.5 - 2.5	528 mm	237.81.351
8.5	1 - 2 - 2.5 - 3	528 mm	237.81.353

Order qty: 1 set

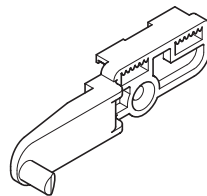
Discontinued ●
Discontinued when stock = 0 +

B Locking pin, for Variant-C

- For right hand installation
- Screw mounting
- Black plastic

Cat. No.	● 237.26.310
----------	-------------------------

Order qty: 1 pc

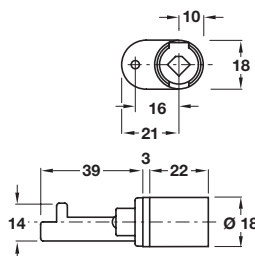


C Symo 3000 cylinder lock

- Use with Variant-C central locking bars
- For installation in the front panel
- With lifting panel
- Locking travel 180°, travel 12 mm
- Zinc alloy

Finish	Cat. No.
Matt nickel	237.86.600

Order qty: 1 pc



Dimensions in mm

We reserve the right to alter specifications without notice.