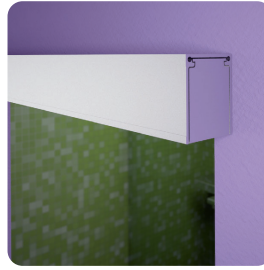
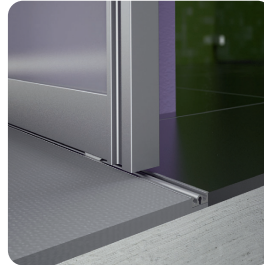


- **Application:** Aluflex 80 is a bottom rolling sliding door system for aluminium framed wardrobe or partition doors
- **Range:** Max. door panel weight **80 kg**  
Max. door height **3000 mm**  
Max. door width **500-1500 mm**  
For board thickness **10 mm**  
or  
For glass thickness **6/8 mm** when clip on glass profiles used. With -5 to +10 mm height adjustment
- Clip-on profiles **Q** and **R**, for stabilisation and as clatter prevention for inserted glass or timber panel
- Wall connection profile **T**, for vertical connection to wall or mounting of fixed element
- Brush seal **X**, to protect the inside of the wardrobe from dust
- End bracket **Y**, for covering sides of track when Vorfront design
- Soft close mechanism set **AB**, consists of: 1x dampener, 1x base plate and 1x follower



Single top channel side mounted with end bracket



Clear threshold option: bottom track recessed



**Discontinued** • **Items on this page have been Re-instated**  
**Discontinued when stock = 0** +

### Aluflex 80 top channels and bottom tracks

Item	Description	Base material and finish	2.0 m	3.0 m
<b>A</b>	Single top track screw fixing	Silver anodised aluminium	403.76.920	403.76.930
<b>B</b>	Double top track screw fixing	Silver anodised aluminium	403.72.920	403.72.930
<b>C</b>	Double top track screw fixing, for use with soft closing mechanism	Silver anodised aluminium	403.70.920	403.70.930
<b>D</b>	Triple top track screw fixing	Silver anodised aluminium	403.71.920	403.71.930
<b>E</b>	Single bottom track glue fixing	Silver anodised aluminium	403.57.920	403.57.930
<b>F</b>	Single bottom track recessed	Silver anodised aluminium	403.77.920	403.77.930
<b>G</b>	Double bottom track glue fixing	Silver anodised aluminium	403.58.920	403.58.930
<b>H</b>	Double bottom track recessed	Silver anodised aluminium	403.78.920	403.78.930
<b>I</b>	Triple bottom track glue fixing	Silver anodised aluminium	403.66.920	403.66.930

### Aluflex 80 top guide, bottom roller and stopper

Item	Description	Base material and finish	Order qty per door	Cat. No.
<b>J</b>	Top guide for screw fixing onto top frame profile	Galvanized steel	2 pcs	403.50.99T
<b>K</b>	Bottom roller spring and clip-in function for easy installation in bottom profile	Galvanized steel	2 pcs	403.50.940
<b>L</b>	Centre door stopper for screw fixing into top channel	Grey plastic	1 pc	403.50.945

### Aluflex 80 aluminium frame profiles

Item	Description	Base material and finish	1.5 m	2.0 m	3.0 m
<b>M</b>	Top profile for assembling aluminium frame, for 10 mm board	Silver anodised aluminium	403.62.915	-	-
<b>N</b>	Bottom profile for assembling aluminium frame, for 10 mm board	Silver anodised aluminium	403.61.915	-	-
<b>O</b>	Vertical profile for assembling aluminium frame, for 10 mm board	Silver anodised aluminium	-	403.63.920	403.63.930

### Aluflex 80 profile accessories

Item	Description	Base material and finish	1.5 m	2.0 m	3.0 m
<b>P</b>	Bar profile for subdividing door panel	Silver anodised aluminium	403.52.915	-	-
<b>Q</b>	Clip-on profile for 6 mm thick glass panel	Transparent plastic	403.56.915	-	403.56.930
<b>R</b>	Clip-on profile for 8 mm thick glass panel	Transparent plastic	403.79.915	-	403.79.930
<b>S</b>	Design bar profile to give appearance of subdividing panels, glue fixing	Silver anodised aluminium	-	403.53.915	-
<b>T</b>	Wall connection profile screw fixing	Silver anodised aluminium	-	-	+ 403.65.930
<b>U</b>	Fixing clips for bar profile			1 pc	+ 403.50.960
<b>V</b>	Cover plug for plug fitting into drill hole in vertical frame profile	Silver anodised aluminium		1 pc	403.50.970
<b>W</b>	SPAX pan head screw Ø 4.5x35 mm, pozi bit head, for profile assembly	Galvanized steel		Multiples of 500 pcs	018.20.153*

### Aluflex 80 accessories

Item	Description	Base material and finish	Order qty	Cat. No.
<b>X</b>	Brush seal, 20 m length self-adhesive fixing for vertical frame profile	Grey brush	1 length	403.54.520
<b>Y</b>	End bracket for single top track <b>A</b> , screw fixing	White aluminium coloured coated steel	1 pc	403.55.991
<b>Z</b>	Cover cap for single bottom tracks <b>E</b> and <b>F</b> , if required	Brushed stainless steel	1 pc	403.55.060
<b>AA</b>	Mounting bracket	White aluminium coloured coated steel	1 pc	403.55.980
<b>AB</b>	Soft closing mechanism for door weights up to 50 kg	Black/grey plastic	1 set	403.50.989