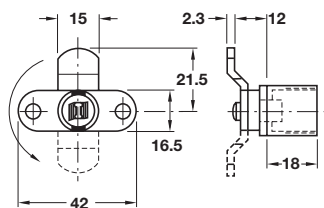
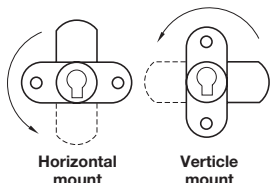


- **Lever-type cam lock cases**
- For on-site installation of cylinder core **A**
- **Without key trap:** Key can be removed in locked or unlocked position
- Closure travel **180°**, anti-clockwise as drawing
- Available for horizontal or vertical mounting
- Bright zinc alloy cases with nickel-plated steel levers
- Check for orientation marker before installation
- Cam is attached with 1/4" Nut: Therefore to change cam position use a spanner or order **combination tool** separately, shown on page 7



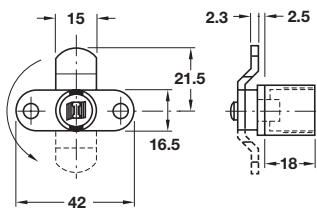
**A Cam lock case**

- With nut attachment
- With inward cranked lever



	Horizontal mount	Vertical mount
Cat. No.	235.08.009	235.08.054

Order qty: 1 pc



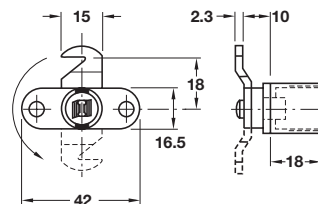
**B Cam lock case**

- With nut attachment
- With outward cranked lever



	Horizontal mount	Vertical mount
Cat. No.	235.08.107	235.08.152

Order qty: 1 pc



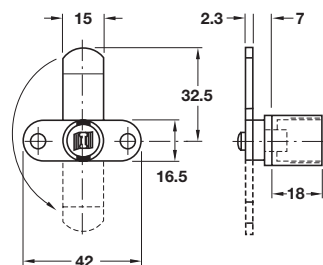
**C Cam lock case**

- With nut attachment
- With inward cranked, hooked lever



	Horizontal mount	Vertical mount
Cat. No.	235.08.205	235.08.250

Order qty: 1 pc



**D Cam lock case**

- With nut attachment
- With straight, extended lever

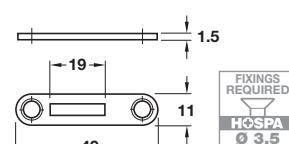
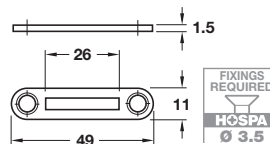


	Horizontal mount	Vertical mount
Cat. No.	235.08.303	235.08.358

Order qty: 1 pc

For cam lock cases A, B and D

For cam lock case C



**E Striking plate**

- Black steel

<b>For cam lock cases A, B, and D</b>	
Cat. No.	239.08.705
<b>For cam lock case C</b>	
Cat. No.	239.08.723

Order qty: 1 pc

TCH 2013, © Häfele U.K. Ltd 2013. Dimensional data not binding. We reserve the right to alter specifications without notice.