

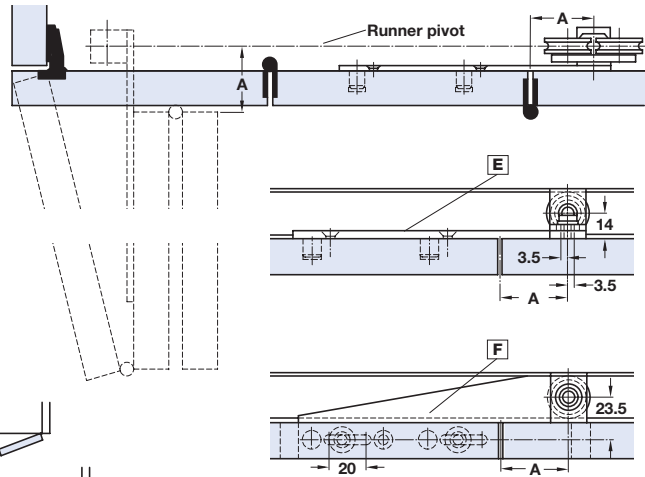
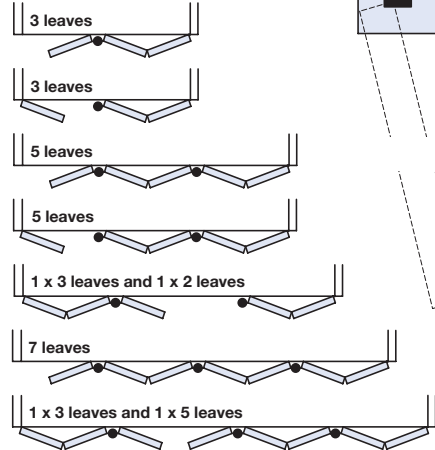
# Fittings for Sliding Folding Timber Partition Doors

## HAWA 230 Top Hung Folding Overlay Fittings

Flush handles shown in Section 5

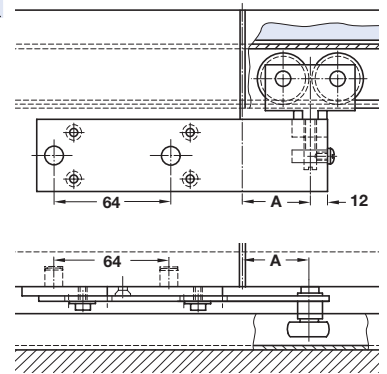
### Typical door configurations

**Important:** Configuration of panels must total odd number



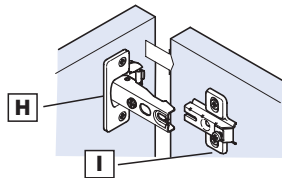
**Important note:** Dim A = hinge pivot to runner pivot

Refer to Hawa drawing no. 15348 for fitting information

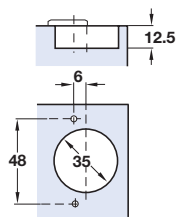


**Please note:** End frame panels will be wider than other panels in the suite

### Suggested frame to panel hinges:



Slide on



#### H Hinge, screw fixing

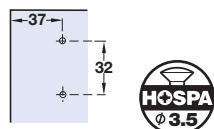
- Opening angle **110°**
- Ø 35 mm cup, 48 mm cup fixing centres
- Slide on arms
- Nickel-plated pressed steel cup and arm

Crank	Screw fixing
0 mm	316.01.608

Order qty: Multiples of 10 pcs

#### I Cruciform mounting plate

- To suit hinge H
- Nickel-plated pressed steel



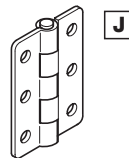
Height	Cat. No.
2 mm	316.91.620

Order qty: Multiples of 10 pcs

### Suggested foldaside butt hinges for panel to panel joints:

#### J Butt hinges

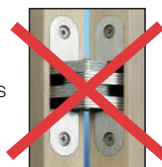
- Stainless steel hinge, for panel thickness +25 mm
- Polished brass or self colour hinge, for panel thickness 19-25 mm
- Other hinges shown in Section 6



Finish	Height x width	Cat. No.
Stainless steel	76 x 50 mm	921.08.104
Brass, self colour	51 x 38 mm	354.10.532

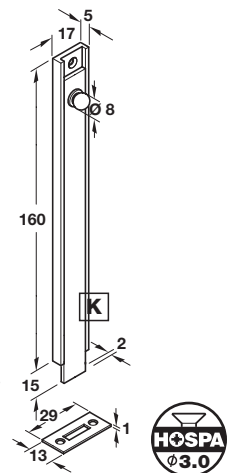
Order qty: 1 pc

**Please note:** The use of concealed soss type hinges with sliding folding cupboard door systems is **NOT** recommended in any circumstances



#### K Knob slide surface bolt, 160 mm

- Surface or semi-recessed fixing, suitable for all light duty applications
- Straight and angled keepers included
- Brass

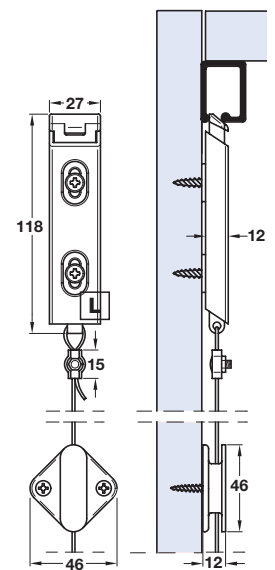


Finish	Cat. No.
Polished brass	900.17.945
Satin nickel-plated	900.17.946

Order qty: 1 pc

#### L Spring loaded latch bolt

- Alternative to K
- Magnetic catches may be used to supplement the bolt
- Full size drawing details available on request
- Aluminium



Finish	Cat. No.
Silver anodised	407.78.907

Order qty: 1 pc

TCH 2013. © Häfele U.K. Ltd 2013. Dimensional data not binding. We reserve the right to alter specifications without notice.