

Bed Fittings

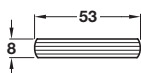
Wooden Slats and Pockets for Beds

Bulk quantities of wooden slats are also available, cut to length. Slat pockets can be made in other colours. Information on request



Wooden slat

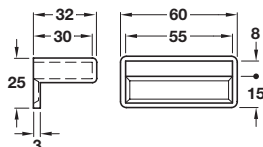
- Height x depth: 8 x 53 mm
- For single beds
- 5 layers, made of beech wood, rounded edges
- Lacquered natural wood



Length	Cat. No.
991 mm	271.63.006

Order qty: Multiples of 10 pcs

Please note, colours of the pockets may vary

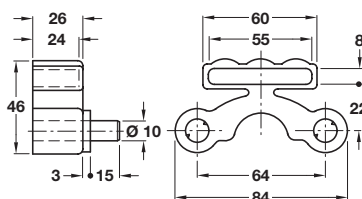


Slat pocket

- For use with 8 x 53 mm wooden slats
- Can be fixed by means of staples on wooden frame
- Rigid plastic

Finish	Cat. No.
Brown	271.62.116

Order qty: Multiples of 10 pcs



Slat pocket

- For use with 8 x 53 mm wooden slats
- Dowel-fixing in wooden frame
- Flexible plastic

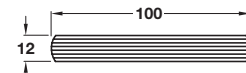
Finish	Cat. No.
Brown	271.62.125

Order qty: Multiples of 10 pcs



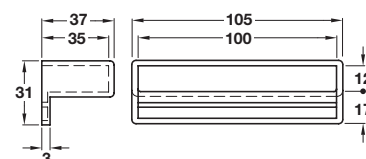
Wooden slat

- Height x depth: 12 x 100 mm
- For double beds
- 7 layers, made of beech wood, rounded edges
- Lacquered natural wood



Length	Cat. No.
1372 mm	271.63.202

Order qty: Multiples of 10 pcs

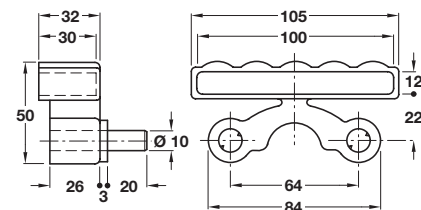


Slat pocket

- For use with 12 x 100 mm wooden slats
- Can be fixed by means of staples on wooden frame
- Rigid plastic

Finish	Cat. No.
Brown	271.62.134

Order qty: Multiples of 50 pcs



Slat pocket

- For use with 12 x 100 mm wooden slats
- Dowel-fixing in wooden frame
- Flexible plastic

Finish	Cat. No.
Brown	271.62.143

Order qty: Multiples of 10 pcs

TCH 2013. © Häfele U.K. Ltd 2013. Dimensional data not binding. We reserve the right to alter specifications without notice.