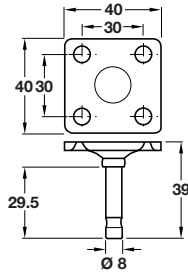
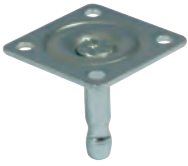


# PIN AND MOUNTING PLATES FOR CASTORS

## Pin and mounting plate, Ø 8 mm

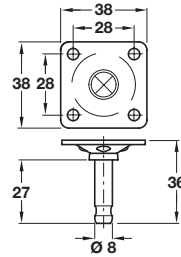


- > For mounting castors with Ø 8 mm pin hole
- > Galvanized steel
- > Order qty: 1 pc



Pin Ø	Cat. No.
Ø 8 mm	660.46.990

## Pin and mounting plate, Ø 8 mm

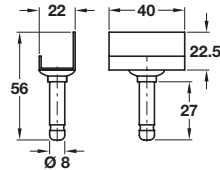


- > For mounting castors with Ø 8 mm pin hole
- > Galvanized steel
- > Order qty: 1 pc



Pin Ø	Cat. No.
Ø 8 mm	660.92.960

## Pin and L mounting plate, Ø 8 mm

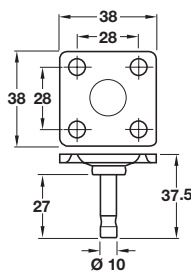


- > For mounting castors with Ø 8 mm pin hole
- > Blackened galvanized steel
- > Order qty: 1 pc



Pin Ø	Cat. No.
Ø 8 mm	660.92.970

## Pin, Ø 10 mm, with mounting plate

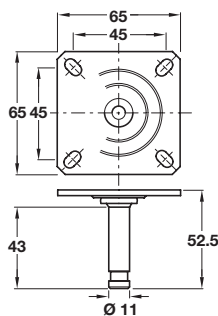
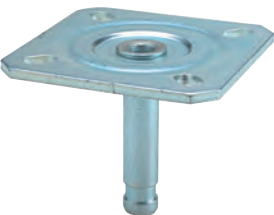


- > For mounting castors with Ø 10 mm pin hole
- > Galvanized steel
- > Order qty: 1 pc



Pin Ø	Cat. No.
Ø 10 mm	660.92.950

## Pin and mounting plate, Ø 11 mm



- > For mounting castors with Ø 11 mm pin hole
- > Galvanized steel
- > Order qty: 1 pc



Pin Ø	Cat. No.
Ø 11 mm	660.92.910

COMPONENTS, FIXINGS AND CONSUMABLES 2014, © Hafele U.K. Ltd 2014. Dimensional data not binding. We reserve the right to alter specifications without notice.