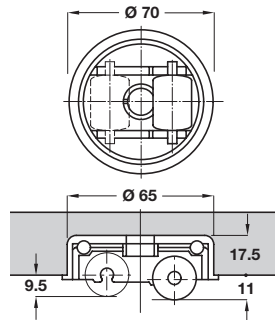


# GLIDES

## GLIDES AND CASTORS WITH LOW INSTALLATION HEIGHT

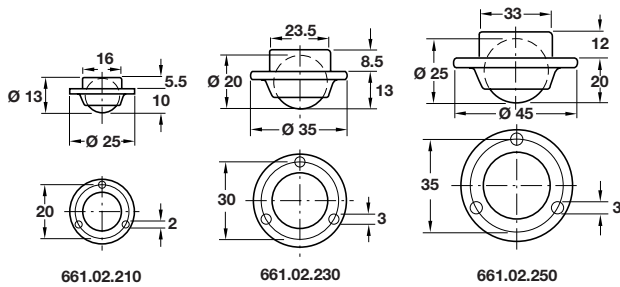
### Roller glide



- > Particularly suited where height restriction applies, 11 mm maximum distance between floor and base of furniture
- > By changing position of the roller the distance from the floor to the base of the furniture can vary from 11 to 9.5 mm
- > Inner wheel housing swivels 360° within outer housing
- > Can be used for mobile pedestals that are stored under desktops
- > Plastic
- > Order qty: 1 pc

Wheel Ø	Load capacity	Without brake
Ø 70 mm	65 kg	661.05.306

### Ball castor

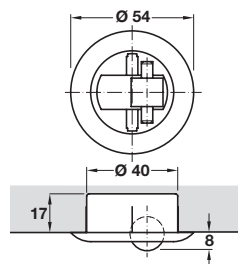


- > Without swivel
- > Screw fixed mounting plate and low installation height
- > If mounted with ball uppermost, can be used as a conveyor system roller
- > Yellow chromatinized steel housing with reinforced base
- > Chrome-plated steel ball
- > Order qty: 1 pc

Ball Ø	Load capacity	Without brake
Ø 13 mm	6 kg	661.02.210
Ø 20 mm	12 kg	661.02.230
Ø 25 mm	17 kg	661.02.250



### Roller glide



- > For embedding into base of furniture
- > Inner housing (white section) swivels 360° within outer housing
- > Black/white plastic
- > Order qty: 1 pc

Wheel Ø	Load capacity	Without brake
Ø 15 mm	15 kg	661.04.309