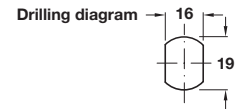
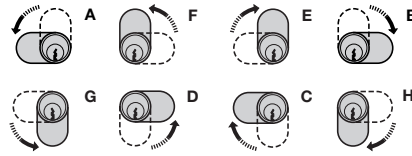
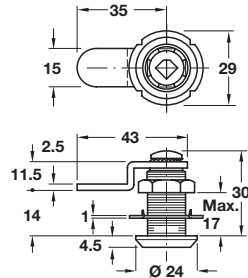
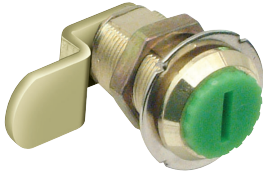


## SYMO 3000 CAM LOCK CASES

- > 90° Closure direction:
- > Closure directions can be altered by re-positioning the cam, but always moving in the same direction:
  - Closure direction A can be altered to D, F or G
  - Closure direction B can be altered to C, E or H



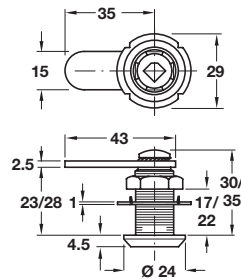
### Cam lock case



- > For on-site installation of cylinder cores
- > With cranked cam
- > Closure travel 90°, convertible\*
- > Polished nickel-plated zinc alloy
- > Accessories: 1x locking cam, 1x mounting screw, 1x nut and 1x steel lock washer
- > Order qty: 1 pc

Closure direction	<b>A (D, F, G*)</b>	<b>B (C, E, H*)</b>
Cat. No.	235.88.820	235.88.830

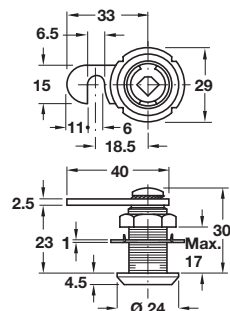
### Cam lock case



- > For on-site installation of cylinder cores
- > With straight cam
- > Closure travel 90°, convertible\*
- > Polished nickel-plated zinc alloy
- > Accessories: 1x locking cam, 1x mounting screw, 1x nut and 1x steel lock washer
- > Order qty: 1 pc

Closure direction	<b>A (D, F, G*)</b>	<b>B (C, E, H*)</b>
Maximum thread 17 mm	235.88.600	235.88.610
Maximum thread 22 mm	235.88.620	235.88.630

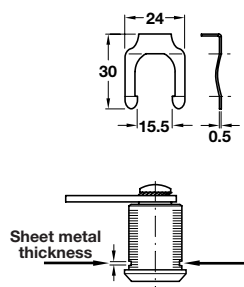
### Cam lock case



- > For on-site installation of cylinder cores
- > With hook cam
- > Closure travel 90°, convertible\*
- > Polished nickel-plated zinc alloy
- > Accessories: 1x locking cam, 1x mounting screw, 1x nut and 1x steel lock washer
- > Order qty: 1 pc

Closure direction	<b>A (D, F, G*)</b>	<b>B (C, E, H*)</b>
Cat. No.	235.88.720	235.88.730

### Cam lock clip



- > For sheet metal thickness of 0.8-1.5 mm
- > For use when mounting cam locks into metal doors
- > Steel
- > Order qty: 1 pc

Finish	Cat. No.
Nickel-plated	235.88.990