

SYMO 3000 HANDLES

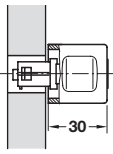


Fig. shows: **30 mm** lock handle with **1.2 mm** cover plate and plate lever cylinder core

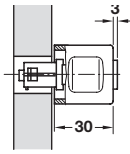
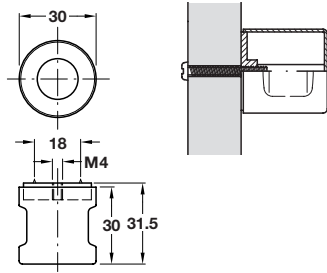


Fig. shows: **30 mm** lock handle with **4.2 mm** cover plate and pin tumbler cylinder core

Fixed handle, screw mounting



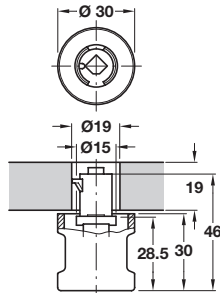
- > With M4 internal thread
- > Zinc alloy
- > Accessories: 1x M4 x 25 mm mounting screw, 1x cover cap
- > Order qty: 1 pc

Finish	Cat. No.
Matt nickel-plated	229.81.600

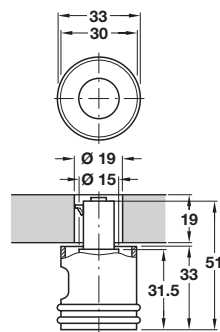
Lock handle for cylinder cores



Lock handle without rings



Lock handle with rings

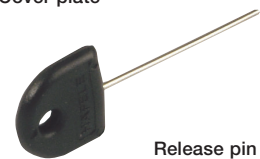
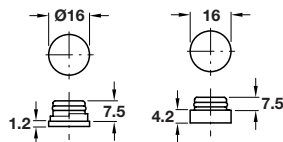


- > For on-site installation of cylinder cores
- > Handed
- > For 19 mm wood thickness
- > Matt nickel-plated zinc alloy
- > Order qty: 1 pc

! > It is only possible to remove the lock handle by using the release pin



Cover plate



Release pin

Item	Left	Right
Lock handle without rings	229.80.620	229.80.610
Lock handle with rings	-	229.84.600
		Cat. No.
Cover plate, 1.2 mm		229.83.691
Cover plate, 4.2 mm		229.83.692
Release pin, plastic cap with steel pin		229.85.990



- > Symo 3000 lock cases are shown on pages **179-190**
- > Cylinder cores for Symo 3000 lock cases are shown on pages **193-197**