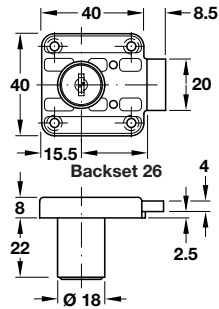


Rim lock, drawer version



- > With Ø 18 mm cylinder
- > Backset: 26 mm
- > Screw fixing
- > 5 plate levers = 200 possible key changes
- > Zinc alloy case and cylinder
- > Accessories: 2x keys
- > No master key possible
- > Order qty: 1 pc

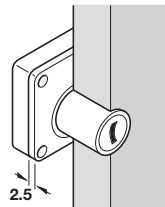
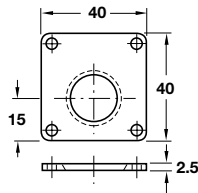
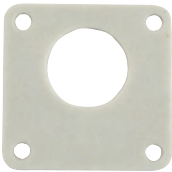


Finish	Cat. No.
Random key changes	
Gold coloured	232.04.926
Matt nickel-plated	232.04.622
Chrome-plated	232.04.220
Keyed alike: Key change FH1	
Gold coloured	232.04.971
Matt nickel-plated	232.04.677
Chrome-plated	232.04.275



> Order cylinder rosette separately, shown on page 249

Spacer plate



- > Suitable for rim locks shown above and on page 198
- > Plastic
- > Order qty: Multiples of 10 pcs

Finish	Cat. No.
Light grey	232.03.992



- > Strike plates and cylinder rosettes are shown on pages 246-249
- > Unless otherwise indicated fixing screws are not included and must be ordered separately, Hospa screws are shown on pages 388-393, 402
- > The symbol shown indicates the type and size of screw required