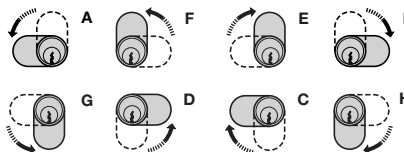


CAM LOCKS

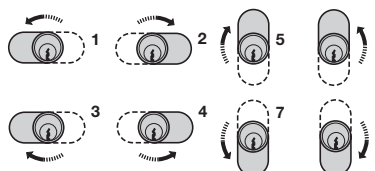
For wooden and metal furniture.

- > 90° and 180° Closure directions
- > Closure directions can be altered by re-positioning the cam, but always moving in the same direction:
 - Closure direction A can be altered to D, F or G
 - Closure direction B can be altered to C, E or H
 - Closure direction 1 can be altered to 2 - 8

90° Closure directions



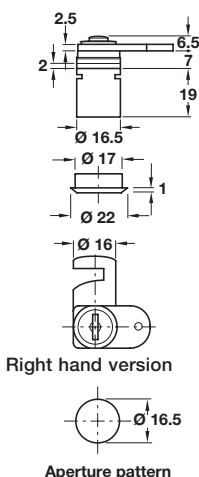
180° Closure directions



Cam lock, for wooden furniture



Left hand version



Right hand version
Aperture pattern

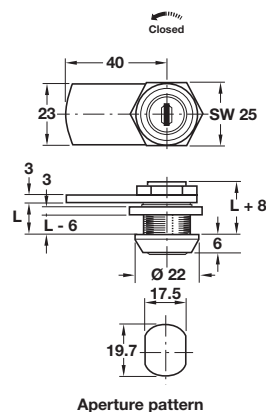
- > With straight cam
- > Closure travel 180°
- > Without key trap; key can be removed in locked and unlocked position
- > 5 plate levers = 200 possible key changes
- > Zinc-plated steel cam
- > Nickel-plated zinc alloy cylinder
- > Accessories: 2x keys, 1x locking cam and 1x cylinder rosette
- > Order qty: 1 pc

Closure direction	180° 5-8
Random key changes	
Left hand	235.02.710
Right hand	235.02.720

Cylinder cam lock, for metal furniture



Right hand direction A version



Aperture pattern

- > With straight cam and nut attachment
- > Closure travel 90° or 180°
- > 90° with key trap; key can only be removed in locked position
- > 180° without key trap; key can be removed in locked and unlocked position
- > 5 plate levers = 200 possible key changes
- > Galvanized steel nuts and cam
- > Polished chrome-plated zinc alloy cylinder
- > Accessories: 2x keys, 1x locking cam and 2x nuts
- > Order qty: Multiples of 10 pcs

Closure direction	90° A (D,F,G)	90° B (C,E,H)	180° 1 (2-8)
Length L			
Random key changes			
13.0 mm	235.73.211	235.73.220	235.73.202
26.0 mm	-	-	235.74.209
32.5 mm	-	-	235.75.206
Keyed alike: Key change FH1			
13.0 mm	235.73.266	235.73.275	235.73.257
26.0 mm	-	-	235.74.254
32.5 mm	-	-	235.75.251

> Locking plate, where necessary, must be ordered separately, shown on page 248

COMPONENTS, FIXINGS AND CONSUMABLES 2014, © Häfele U.K. Ltd 2014. Dimensional data not binding. We reserve the right to alter specifications without notice.