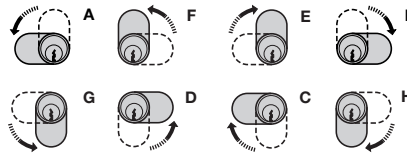


CAM LOCKS

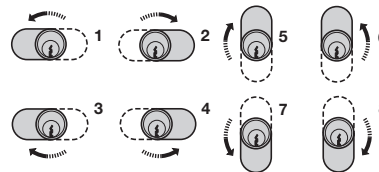
For metal furniture.

- > 90° and 180° Closure directions
- > Closure directions can be altered by re-positioning the cam, but always moving in the same direction:
 - Closure direction A can be altered to D, F or G
 - Closure direction B can be altered to C, E or H
 - Closure direction 1 can be altered to 2 - 8

90° Closure directions



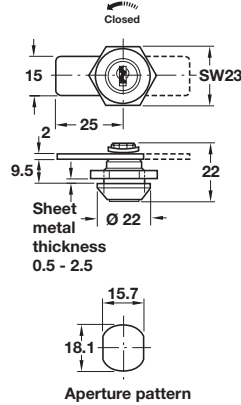
180° Closure directions



Cylinder cam lock



Right hand, direction A



- > With straight cam and nut attachment
- > For use with 0.8-2.5 mm sheet metal
- > Closure travel 90° or 180°
- > 90° with key trap; key can only be removed in locked position
- > 180° without key trap; key can be removed in locked and unlocked position
- > 6 plate levers = 200 possible key changes
- > Galvanized steel nut and cam
- > Polished chrome-plated zinc alloy cylinder
- > Accessories: 2x keys, 1x cam lock, 1x nut and 1x cam (pre-mounted)
- > Order qty: 1 pc

| Closure direction | 90° A (D,F,G) | 90° B (C,E,H) | 180° 1 (2-8) |
|-------------------|---------------|---------------|--------------|
|-------------------|---------------|---------------|--------------|

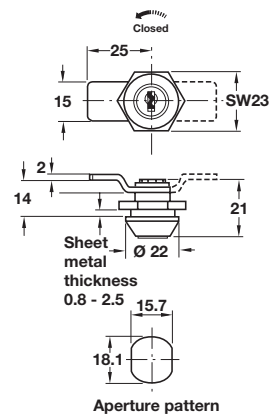
Random key changes

| | | |
|------------|------------|------------|
| 235.72.400 | 235.72.430 | 235.72.460 |
|------------|------------|------------|

Keyed alike: Key change 60-001

| | | |
|------------|------------|------------|
| 235.72.401 | 235.72.431 | 235.72.461 |
|------------|------------|------------|

Cylinder cam lock



- > With cranked cam and nut attachment
- > For use with 0.8-2.5 mm sheet metal
- > Closure travel 180°
- > Without key trap; key can be removed in locked and unlocked position
- > 6 plate levers = 200 possible key changes
- > Galvanized steel nut and cam
- > Polished chrome-plated zinc alloy cylinder
- > Accessories: 2x keys, 1x cam lock, 1x nut, 1x lock washer and 1x cam (pre-mounted)
- > Order qty: 1 pc

| Closure direction | 180° 1 (2-8) |
|-------------------|--------------|
|-------------------|--------------|

Random key changes

| |
|------------|
| 234.64.400 |
|------------|

Keyed alike: Key change 60-001

| |
|------------|
| 234.64.401 |
|------------|