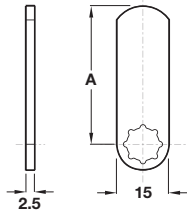


Straight cam



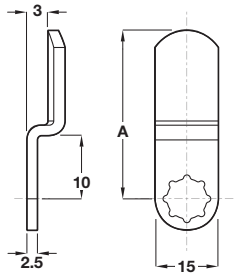
- > Galvanized steel
- > Order qty: 1 pc



> For use with padlockable cam locks shown on page 213

Dim. A	Cat. No.
40 mm	235.61.910
50 mm	235.61.911

Cranked cam



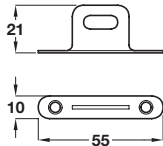
- > 3 mm cranked cam
- > Galvanized steel
- > Order qty: 1 pc



> For use with padlockable cam locks shown on page 213

Dim. A	Cat. No.
50 mm	235.61.900

Padlock staple

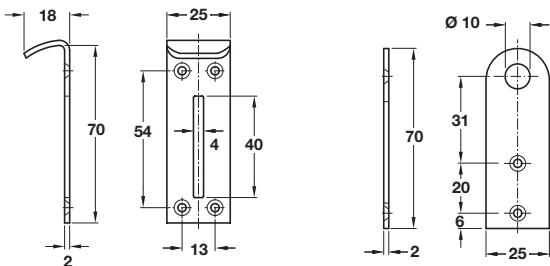
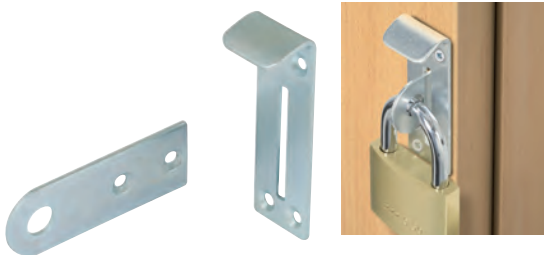


- > For use with a padlock
- > Steel
- > Order qty: 1 pc



Finish	Cat. No.
Matt chrome	415.13.052

Safe deposit box lock



- > For use with padlocks (padlock not included)
- > Max. shackle: Ø 7.5 mm
- > Steel
- > Order qty: 1 pc



Finish	Cat. No.
Galvanized	236.05.906