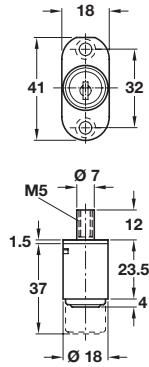


PUSH BUTTON SLIDING DOOR LOCKS


Push-button cylinder, Ø 18 mm




- > Lock; by pushing in the cylinder
- > Unlock; by turning the key
- > 5 plate levers = 200 possible key changes
- > Locking pin with M5 internal thread
- > Matt nickel-plated zinc alloy case and cylinder
- > Accessories: 2x keys
- > Order qty: 1 pc



Key type	Cat. No.
Random key changes	234.50.600
Keyed alike: Key change	
FH1	234.50.601
FH2	234.50.602
FH3	234.50.603
FH4	234.50.604
FH5	234.50.605

 > Order cylinder rosette separately, shown on page **249**

 > Strike plates and cylinder rosettes are shown on pages **246-249**
 > A guide to master key and general master key systems is shown on page **177**
 > Hospa screws are shown on pages **388-393, 402**