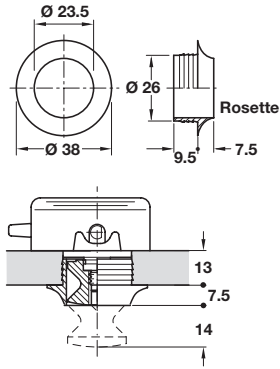


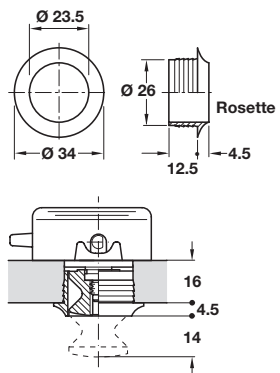
Push-Lock rosette



- > For 13 mm door thickness when used with 19 mm Push-Lock knob A, shown on page **235**
- > Plastic
- > Order qty: 1 pc

Finish	Cat. No.
Matt nickel-plated	229.03.608
Polished brass-plated	229.03.804

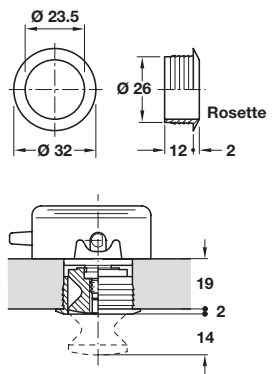
Push-Lock rosette



- > For 16 mm door thickness when used with 19 mm Push-Lock knob A, shown on page **235**
- > For 22 mm door thickness when used with 25 mm Push-Lock knob B, shown on page **235**
- > Plastic
- > Order qty: 1 pc

Finish	Cat. No.
Matt nickel-plated	229.03.617
Polished brass-plated	229.03.813
Brown	229.02.110

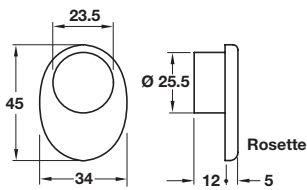
Push-Lock rosette



- > For 19 mm door thickness when used with 19 mm Push-Lock knob A, shown on page **235**
- > For 25 mm door thickness when used with 25 mm Push-Lock knob B, shown on page **235**
- > Plastic
- > Order qty: 1 pc

Finish	Cat. No.
Matt nickel-plated	229.03.626
Polished brass-plated	229.03.822

Push-Lock rosette



- > For 19 mm door thickness when used with 19 mm Push-Lock knob A, shown on page **235**
- > For 25 mm door thickness when used with 25 mm Push-Lock knob B, shown on page **235**
- > Plastic
- > Order qty: 1 pc

Finish	Cat. No.
Matt nickel	229.03.632



> For use with Push-Locks locks, shown on pages **232-233**