
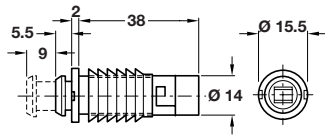


MAGNETIC PRESSURE CATCHES

Pressure on the door surface opens the door, light pressure closes the door.

 > For all magnetic pressure catches counterplates must be ordered separately, shown on page **265**

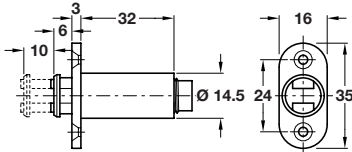
Magnetic pressure catch, morticed/press-fit



- > Plastic
- > Pull 1.2 kg
- > Morticed and press-fit fixing
- > 2.5 mm adjustment
- > Order qty: 1 pc

Finish	Cat. No.
Black	245.62.338

Magnetic pressure catch, morticed/screw fixing

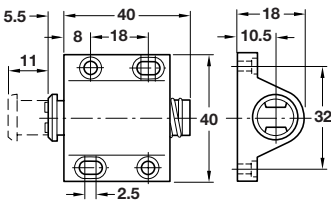


- > Plastic
- > Pull 1.4 kg
- > Morticed and screw fixing
- > Order qty: 1 pc



Finish	Cat. No.
Black	245.62.311

Magnetic pressure catch, screw fixing

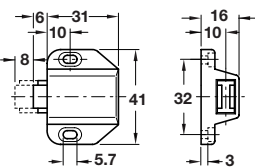


- > Plastic
- > Screw fixing, adjustment via slot
- > Order qty: 1 pc



Finish	Cat. No.
Black	245.68.312

Magnetic pressure catch, for single glass doors

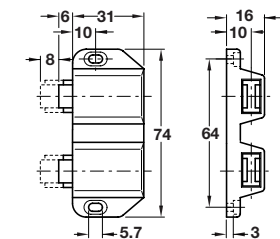


- > Plastic
- > Pull 1.8 kg
- > Screw fixing, adjustment with slot
- > Order qty: 1 pc



Finish	Cat. No.
Black	245.67.310

Magnetic pressure catch, for double glass doors



- > Plastic
- > Pull 2.5 kg
- > Screw fixing, adjustment via slot
- > Order qty: 1 pc



Finish	Cat. No.
Black	245.67.320

COMPONENTS, FIXINGS AND CONSUMABLES 2014, © Häfele U.K. Ltd 2014. Dimensional data not binding. We reserve the right to alter specifications without notice.