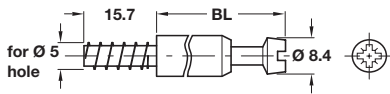


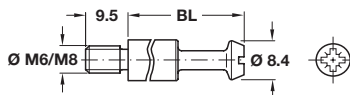
## S35 Maxifix connecting bolt



- > Screws directly into Ø 5 mm holes
- > With special thread
- > Galvanized steel
- > Order qty: Multiples of 50 pcs

Bolt length BL	28.5 mm	48.5 mm
Drilling distance B	35 mm	55 mm
Cat. No.	262.87.931	262.87.932

## S35 Maxifix connecting bolt



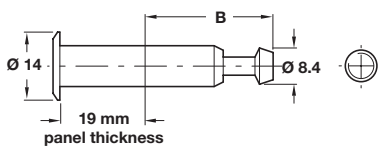
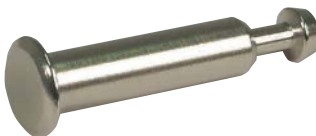
- > Screws into M6 or M8 sleeve
- > Galvanized steel
- > Order qty: Multiples of 50 pcs

Bolt length BL	28.5 mm	48.5 mm
Drilling distance B	35 mm	55 mm
M6 thread	262.87.901	262.87.902
M8 thread	262.87.911	262.87.912



> Screw in sleeves and dowels with M6/M8 internal thread are shown on pages **420-421**

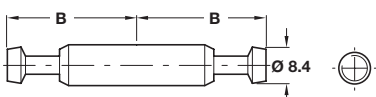
## Maxifix capped connecting bolt



- > For single-sided installation through Ø 9 mm hole
- > Steel
- > Order qty: Multiples of 50 pcs

Drilling distance B	35 mm
Nickel-plated	262.87.781
Bronzed	262.87.181

## Maxifix double ended bolt



- > For double-sided installation through Ø 9 mm holes
- > Galvanized steel
- > Order qty: Multiples of 50 pcs

Drilling distance B	35 mm
Cat. No.	262.87.921