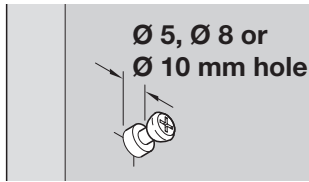


IXCONNECT RAFIX BOLTS

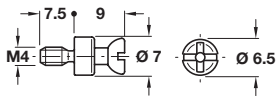
For installation in dowels or sleeves.

- > Rafx connecting bolts with M4 or M6 thread
- > To be screwed into dowels or sleeves
- > For Ø 5, Ø 8 or Ø 10 mm holes
- > For single and double sided constructions



- Cross slot**
Tighten with PZ2 screwdriver only (cross slot size 2)
- Combination slot**
Tighten with PZ2 screwdriver or flat bladed screwdriver

Rafx connecting bolt, M4 thread

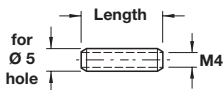
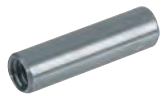


- > Screw in sleeves and dowels with M4 internal thread are shown on page **419**

- > With M4 thread, for screwing into dowels or sleeves
- > For direct screw-in installation in Ø 5 mm holes or for press-fit installation in Ø 8 or Ø 10 mm holes when used with dowels
- > Steel
- > Order qty: Multiples of 100 pcs

Finish	Cat. No.
Bright	263.21.111
Galvanized	263.21.817

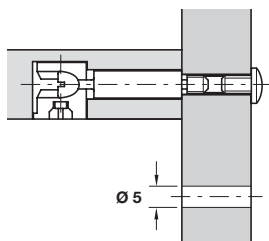
Sleeve, M4 thread



- > With M4 internal thread, for press-fit installation in Ø 5 mm holes
- > For double-sided installation
- > Steel
- > Order qty: Multiples of 100 pcs

Length	15 mm	18 mm	22 mm	30 mm
Bright	267.00.011	267.00.012	267.00.013	-
Galvanized	267.00.911	267.00.912	267.00.913	267.00.916

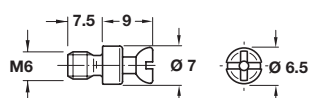
End screw, pan head, M4 thread



- > With M4 thread and combination slot
- > For screwing into sleeve above for single-sided constructions
- > Drive: PZ2 cross slot
- > Nickel-plated steel
- > Order qty: Multiples of 100 pcs

Length	8 mm	10 mm
Cat. No.	020.92.711	020.92.720

Rafx connecting bolt, M6 thread



- > Screw in sleeves and dowels with M6 internal thread are shown on page **420**

- > With M6 thread, for screwing into dowels or sleeves
- > For direct screw-in installation in Ø 8 mm holes or for press-fit installation in Ø 10 mm holes when used with dowels
- > Steel
- > Order qty: Multiples of 100 pcs

Finish	Cat. No.
Bright	263.21.120
Galvanized	263.21.826