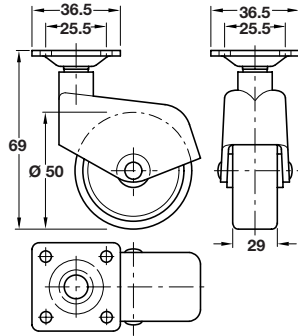


CASTORS WITH Ø 50 OR Ø 65 MM WHEELS

Enclosed wheel swivel castor, Ø 50 mm wheel, plate fixing



Photo shows version without brake



- > With 36.5 x 36.5 mm mounting plate
- > Chrome-plated zinc alloy housing with grey soft plastic wheels
- > Order qty: 1 pc

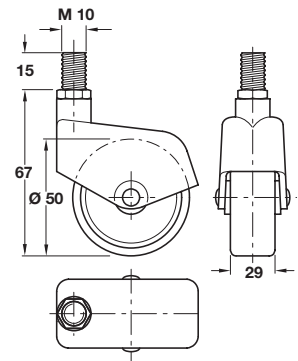


Wheel Ø	Load capacity	Without brake	With brake
Ø 50 mm	50 kg	660.18.264	660.19.261

Enclosed wheel swivel castor, Ø 50 mm wheel, M10 thread fixing



Photo shows version with brake



- > With M10 x 15 mm threaded bolt
- > Chrome-plated zinc alloy housing with grey soft plastic wheels
- > Order qty: 1 pc



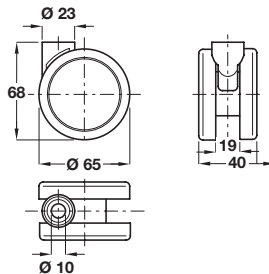
> M10 T-nut for mounting thread fixing castors under wooden bases are shown on page 111

Wheel Ø	Load capacity	Without brake	With brake
Ø 50 mm	50 kg	660.18.282	660.19.289

Twin wheel swivel castor, Ø 65 mm wheels, with Ø 10 mm pin hole



Photo shows version with brake



- > For use with Ø 10 mm pin
- > Aluminium coloured plastic housing, dark grey non-marking rubber wheel and black plastic brake
- > Order qty: 1 pc



> Ø 10 mm pin and mounting plates are shown on pages 110-111

Wheel Ø	Load capacity	Without brake	With brake
Ø 65 mm	50 kg	660.91.914	660.90.914