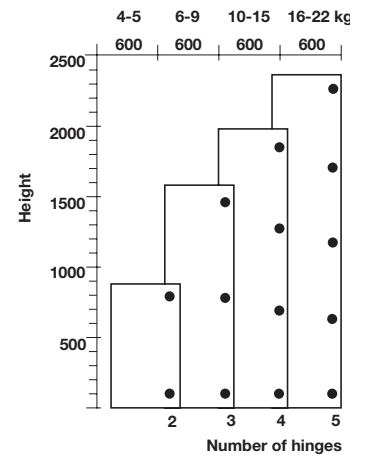
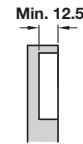
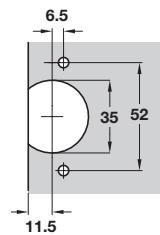


HÄFELE 270° HINGE AND MOUNTING PLATES



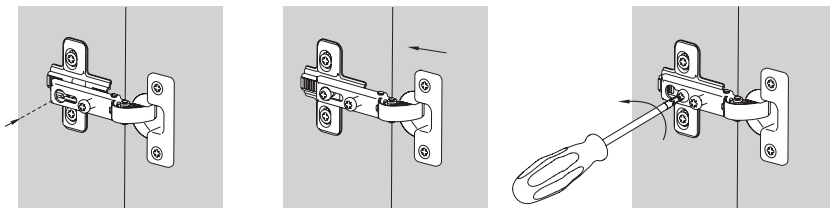
- > Opening angle 270°, Ø 35 mm cup
- > Screw fixing cup
- > For door thicknesses up to 22 mm
- > Full overlay mounting zinc cup and hinge arm
- > Order fixing screws separately
- > Order qty: 1 pc



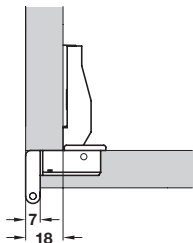
Key-hole system

- Miniprimat series
- Special hinges

The hinge is assembled on the mounting plate inserting the fixing screw on the appropriate hole on the hinge arm. After adjusting the door depth, the mounting procedure is finished by tightening the fixing screw.



Full overlay mounting



Side panel thickness mm							
18	19	20	21	22	23	24	
0	1	2	3	4	5	6	0
Side panel overlay mm				Mounting plate height mm			



Fixing	Keyhole fixing
Screw fixing	312.50.600

YOU ALSO NEED:

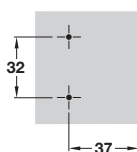
MOUNTING PLATES
Shown below

FIXING SCREWS
Page 468

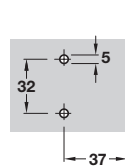
OPTIONAL ACCESSORIES
Pages 403-417

Keyhole fixing mounting plate for 270° hinge only

For Hospa screws



With pre-mounted Euro screws



- > Hospa screw fixing or with pre-mounted Euro screws
- > Nickel-plated zinc
- > Order fixing screws separately for Hospa screw fixing version
- > Order qty: Multiples of 10 pcs



Height	Pre-mounted Euro screws	Hospa screws
0 mm	312.56.610	312.56.600