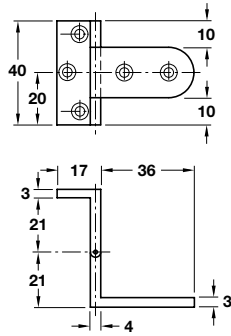
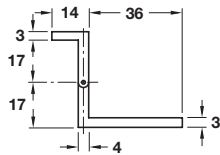


**Neuform hinge**



For 19-20 mm door thickness



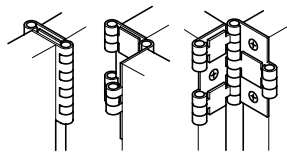
For 15-16 mm door thickness

- > Butt hinge for overlay doors
- > Ø 4 mm barrel
- > Drawn profiled brass
- > Order fixing screws separately
- > Order qty: 1 pc

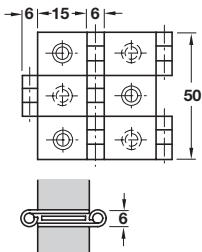


Finish	Cat. No.	
For door thickness	15-16 mm	19-20 mm
For side panel thickness	from 14 mm	from 17 mm
Polished	307.05.803	307.04.806
Polished nickel-plated	307.05.705	307.04.708

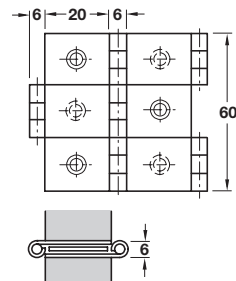
**Two-way hinge**



- > 3-part hinge, works in both directions
- > Ø 6 mm barrel
- > Polished brass
- > Order fixing screws separately
- > Order qty: 1 pc



For 15 mm door/side thickness

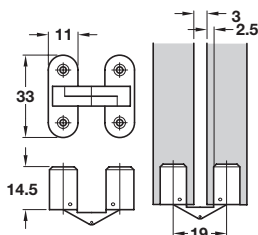


For 20 mm door/side thickness



For door/side thickness	15 mm	20 mm
Cat. No.	341.20.806	341.20.815

**Concealed hinge**



- > Opening angle 180°
- > Machine drilling possible
- > Unhanded design
- > Hinge fixing: Self-tapping cams
- > For minimum door and side panel thicknesses of 16 mm
- > Brown plastic case, with bronze-plated brass links
- > Order fixing screws separately
- > Order qty: 1 pc



Opening angle	Cat. No.
180°	341.04.101

DRAWER SYSTEMS, STAYS AND HINGES 2015, © Häfele U.K. Ltd 2015. Dimensional data not binding. We reserve the right to alter specifications without notice.